



# Certificate of Analysis

CDPHE QA SAMPLE

1 of 4

ICAL ID: 20240618-019  
Sample: CA240618-006-012  
CKB37  
Strain: CKB37  
Category: Ingestible  
Type: Beverage

Climbing Kites, LLC  
Lic. #  
P.O. Box 655  
Salida, CO 81201  
Chill State Collective  
Lic. #  
2075 Ellis Ave. Saint Paul, MN 55114

Batch#: CKB37  
Batch Size Collected:  
Total Batch Size:  
Collected: 06/24/2024; Received: 06/24/2024  
Completed: 06/24/2024

Moisture NT	Δ9-THC 9.81 mg/unit	CBD 19.28 mg/unit	Total Cannabinoids 29.09 mg/unit	Sum of Cannabinoids 29.09 mg/unit	Total Terpenes NT
Water Activity NT					

## Summary

Batch	SOP Used	Date Tested	
Cannabinoids	POT-PREP-002	06/20/2024	Pass
Residual Solvents	RS-PREP-001	06/18/2024	Complete
Microbials	MICRO-PREP-001	06/20/2024	Pass
Mycotoxins	PESTMICO-LC-PREP-001	06/20/2024	Pass
Heavy Metals	HM-PREP-001	06/18/2024	Pass
Pesticides	PESTMICO-LC-PREP-001 / PEST-GC-PREP-001	06/20/2024	Pass



Scan to see results

## Cannabinoid Profile

1 Unit = can, 353.08 g. 1 mL = 1 g.

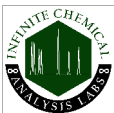
Analyte	LOQ (mg/g)	LOD (mg/g)	%	mg/g	mg/mL	mg/unit	Analyte	LOQ (mg/g)	LOD (mg/g)	%	mg/g	mg/mL	mg/unit
THCa	0.0128	0.0043	ND	ND	ND	ND	CBGa	0.0046	0.0015	ND	ND	ND	ND
Δ9-THC	0.0046	0.0010	0.003	0.03	0.03	9.81	CBG	0.0046	0.0005	<LOQ	<1	<1	<LOQ
Δ8-THC	0.0046	0.0014	ND	ND	ND	ND	CBN	0.0046	0.0005	ND	ND	ND	ND
THCV	0.0046	0.0006	ND	ND	ND	ND	Total THC			0.00	0.03	0.03	9.81
CBDa	0.0049	0.0016	ND	ND	ND	ND	Total CBD			0.01	0.05	0.05	19.28
CBD	0.0046	0.0008	0.005	0.05	0.05	19.28	Total			0.01	0.08	0.08	29.09
CBDV	0.0046	0.0004	ND	ND	ND	ND	Sum of			0.01	0.08	0.08	29.09
CBC	0.0076	0.0025	ND	ND	ND	ND	Cannabinoids			0.01	0.08	0.08	29.09

Total THC = THCa \* 0.877 + Δ9-THC; Total CBD = CBDa \* 0.877 + CBD. NR = Not Reported, ND = Not Detected. Potency is reported on a dry weight basis. Instrumentation and analysis SOPs used: Cannabinoids: UHPLC-DAD (POT-INST-005), Moisture: Moisture Analyzer (MOISTURE-001). The measurement of uncertainty for total THC concentration is ± 0.009%.

## Terpene Profile

Analyte	LOQ (mg/g)	LOD (mg/g)	%	mg/g	Analyte	LOQ (mg/g)	LOD (mg/g)	%	mg/g
---------	------------	------------	---	------	---------	------------	------------	---	------

NR = Not Reported (no analysis was performed); ND = Not Detected (the concentration is less than the Limit of Detection (LOD)). Analytical instrumentation used: HS-GC-MS; samples analyzed according to SOP CO-TERP-INST-003.



Infinite Chemical Analysis Labs  
8312 Miramar Mall  
San Diego, CA  
(858) 623-2740  
www.infiniteCAL.com  
Lic# C8-000047-LIC

*Josh M Swider*

Josh Swider  
Lab Director, Managing Partner  
06/24/2024

Confident LIMS  
All Rights Reserved  
coa.support@confidentlims.com  
(866) 506-5866  
www.confidentlims.com



This product has been tested by Infinite Chemical Analysis Labs, LLC using validated testing methods and a quality control system as required by state law. Sample processing and testing was performed in accordance with CDPHE Colorado Wholesale Food, Industrial Hemp, and Shellfish Regulations (6 CCR 1010-21). Values reported relate only to the product tested. Infinite Chemical Analysis Labs, LLC makes no claims pertaining to the efficacy, safety, or other risks associated with any detected or non-detected levels of any compounds reported herein. This Certificate shall not be reproduced except in full without the written approval of Infinite Chemical Analysis Labs, LLC.



# Certificate of Analysis

CDPHE QA SAMPLE

2 of 4

ICAL ID: 20240618-019  
Sample: CA240618-006-012  
CKB37  
Strain: CKB37  
Category: Ingestible  
Type: Beverage

Climbing Kites, LLC  
Lic. #  
P.O. Box 655  
Salida, CO 81201  
Chill State Collective  
Lic. #  
2075 Ellis Ave. Saint Paul, MN 55114

Batch#: CKB37  
Batch Size Collected:  
Total Batch Size:  
Collected: 06/24/2024; Received: 06/24/2024  
Completed: 06/24/2024

## Residual Solvent Analysis

Category 1	LOQ	LOD	Limit	Status	Category 2	LOQ	LOD	Limit	Status	Category 2	LOQ	LOD	Limit	Status			
	µg/g	µg/g	µg/g	µg/g		µg/g	µg/g	µg/g	µg/g		µg/g	µg/g	µg/g	µg/g			
1,2-Dichloro-Ethane	ND	0.264	0.088	1	Pass	Acetone	ND	51.246	0.716	5000	Pass	n-Hexane	ND	0.281	0.027	290	Pass
Benzene	ND	0.052	0.017	1	Pass	Acetonitrile	ND	0.42	0.14	410	Pass	Isopropanol	ND	2.86	0.614	5000	Pass
Chloroform	ND	0.076	0.025	1	Pass	Butane	ND	4.849	0.748	5000	Pass	Methanol	ND	2.602	0.867	3000	Pass
Ethylene Oxide	ND	0.579	0.179	1	Pass	Ethanol	ND	7.575	2.525	5000	Pass	Pentane	ND	5.075	1.692	5000	Pass
Methylene-Chloride	ND	0.729	0.08	1	Pass	Ethyl-Acetate	ND	2.288	0.175	5000	Pass	Propane	ND	9.709	3.236	5000	Pass
Trichloroethene	ND	0.145	0.028	1	Pass	Ethyl-Ether	ND	2.869	0.389	5000	Pass	Toluene	ND	0.864	0.067	890	Pass
						Heptane	ND	2.859	0.496	5000	Pass	Xylenes	ND	2.572	0.326	2170	Pass

NR = Not Reported (no analysis was performed), ND = Not Detected (the concentration is less than the Limit of Detection (LOD)). Analytical instrumentation used: HS-GC-MS; samples analyzed according to SOP CO-RS-INST-003.

## Heavy Metal Screening

	LOQ	LOD	Limit	Status	
	µg/g	µg/g	µg/g	µg/g	
Arsenic	ND	0.009	0.003	1.5	Pass
Cadmium	ND	0.002	0.001	0.5	Pass
Lead	ND	0.004	0.001	0.5	Pass
Mercury	ND	0.014	0.005	1.5	Pass

NR = Not Reported (no analysis was performed), ND = Not Detected (the concentration is less than the Limit of Detection (LOD)). Analytical instrumentation used: ICP-MS; samples analyzed according to SOP CO-HM-INST-003.

## Microbiological Screening

	Limit	Result	Status
	CFU/g	CFU/g	
Salmonella SPP		Not Detected	Pass
STEC		Not Detected	Pass
Total Coliforms	100	NR	NT
Total Aerobic Plate Count	10000	NR	NT
Total Yeast and Mold	1000	NR	NT

ND=Not Detected. Analytical instrumentation used:qPCR and microbial plating; samples analyzed according to SOPs CO-MICRO-PREP-001 and CO-MICRO-PLATE-001.



Infinite Chemical Analysis Labs  
8312 Miramar Mall  
San Diego, CA  
(858) 623-2740  
www.infiniteCAL.com  
Lic# C8-0000047-LIC

*Josh M Swider*

Josh Swider  
Lab Director, Managing Partner  
06/24/2024

Confident LIMS  
All Rights Reserved  
coa.support@confidentlims.com  
(866) 506-5866  
www.confidentlims.com



This product has been tested by Infinite Chemical Analysis Labs, LLC using validated testing methods and a quality control system as required by state law. Sample processing and testing was performed in accordance with CDPHE Colorado Wholesale Food, Industrial Hemp, and Shellfish Regulations (6 CCR 1010-21). Values reported relate only to the product tested. Infinite Chemical Analysis Labs, LLC makes no claims pertaining to the efficacy, safety, or other risks associated with any detected or non-detected levels of any compounds reported herein. This Certificate shall not be reproduced except in full without the written approval of Infinite Chemical Analysis Labs, LLC.



# Certificate of Analysis

CDPHE QA SAMPLE

3 of 4

ICAL ID: 20240618-019  
Sample: CA240618-006-012  
CKB37  
Strain: CKB37  
Category: Ingestible  
Type: Beverage

Climbing Kites, LLC  
Lic. #  
P.O. Box 655  
Salida, CO 81201  
Chill State Collective  
Lic. #  
2075 Ellis Ave. Saint Paul, MN 55114

Batch#: CKB37  
Batch Size Collected:  
Total Batch Size:  
Collected: 06/24/2024; Received: 06/24/2024  
Completed: 06/24/2024

## Chemical Residue Screening

Category 1	LOQ	LOD	Status	Mycotoxins	LOQ	LOD	Limit	Status		
	µg/g	µg/g	µg/g		µg/kg	µg/kg	µg/kg			
Aldicarb	ND	0.065	0.022	Pass	B1	ND	7.88	2.6	Tested	
Carbofuran	ND	0.030	0.009	Pass	B2	ND	6.18	2.04	Tested	
Chlorfenapyr	ND	0.075	0.025	Pass	G1	ND	8.99	2.97	Tested	
Chlorpyrifos	ND	0.053	0.018	Pass	G2	ND	5.72	1.89	Tested	
Coumaphos	ND	0.056	0.018	Pass	Ochratoxin A	ND	11.72	3.87	20	Pass
Daminozide	ND	0.079	0.026	Pass	Total Aflatoxins	ND		20	Pass	
Dichlorvos	ND	0.067	0.022	Pass						
Dimethoate	ND	0.036	0.012	Pass						
Ethoprophos	ND	0.053	0.017	Pass						
Etofenprox	ND	0.030	0.008	Pass						
Fenoxycarb	ND	0.043	0.014	Pass						
Fipronil	ND	0.045	0.015	Pass						
Imazalil	ND	0.047	0.016	Pass						
Methiocarb	ND	0.047	0.016	Pass						
Mevinphos	ND	0.042	0.014	Pass						
MGK-264	ND			Tested						
Pacllobutrazol	ND	0.040	0.013	Pass						
Parathion Methyl	ND	0.024	0.008	Pass						
Propoxur	ND	0.047	0.016	Pass						
Spiroxamine	ND	0.032	0.011	Pass						
Thiacloprid	ND	0.042	0.014	Pass						

Category 2	LOQ	LOD	Limit	Status	Category 2	LOQ	LOD	Limit	Status		
	µg/g	µg/g	µg/g	µg/g		µg/g	µg/g	µg/g	µg/g		
Abamectin	ND	0.030	0.010	0.3	Pass	Kresoxim Methyl	ND	0.038	0.012	1	Pass
Acephate	ND	0.050	0.016	5	Pass	Malathion	ND	0.035	0.012	5	Pass
Acequinocyl	ND	0.059	0.019	4	Pass	Metalaxyl	ND	0.031	0.010	15	Pass
Acetamiprid	ND	0.044	0.015	5	Pass	Methomyl	ND	0.048	0.016	0.1	Pass
Azoxystrobin	ND	0.029	0.010	40	Pass	Myclobutanil	ND	0.055	0.018	9	Pass
Bifenazate	ND	0.035	0.012	5	Pass	Naled	ND	0.051	0.017	0.5	Pass
Bifenthrin	ND	0.040	0.013	0.5	Pass	Oxamyl	ND	0.046	0.015	0.3	Pass
Boscalid	ND	0.060	0.020	10	Pass	Pentachloronitrobenzene	ND	0.054	0.018	0.2	Pass
Carbaryl	ND	0.049	0.016	0.5	Pass	Permethrin	ND	0.030	0.008	20	Pass
Chlorantraniliprole	ND	0.063	0.021	40	Pass	Phosmet	ND	0.038	0.012	0.2	Pass
Clofentezine	ND	0.039	0.013	0.5	Pass	Piperonyl Butoxide	ND	0.030	0.008	8	Pass
Cyfluthrin	ND	0.056	0.019	1	Pass	Prallethrin	ND	0.068	0.023	0.4	Pass
Cypermethrin	ND	0.044	0.015	1	Pass	Propiconazole	ND	0.059	0.019	20	Pass
Diazinon	ND	0.030	0.006	0.2	Pass	Pyrethrins	ND	0.030	0.004	1	Pass
Dimethomorph	ND	0.042	0.014	20	Pass	Pyridaben	ND	0.035	0.012	3	Pass
Etoxazole	ND	0.030	0.008	1.5	Pass	Spinetoram	ND	0.030	0.006	3	Pass
Fenhexamid	ND	0.039	0.013	10	Pass	Spinosad	ND	0.030	0.004	3	Pass
Fenpyroximate	ND	0.030	0.010	2	Pass	Spiromesifen	ND	0.042	0.014	12	Pass
Flonicamid	ND	0.081	0.027	2	Pass	Spirotetramat	ND	0.041	0.013	13	Pass
Fludioxonil	ND	0.046	0.015	30	Pass	Tebuconazole	ND	0.044	0.014	2	Pass
Hexythiazox	ND	0.078	0.026	2	Pass	Thiamethoxam	ND	0.055	0.018	4.5	Pass
Imidacloprid	ND	0.071	0.023	3	Pass	Trifloxystrobin	ND	0.031	0.010	30	Pass

### Other Analyte(s):

NR = Not Reported (no analysis was performed), ND = Not Detected (the concentration is less than the Limit of Detection (LOD)). Analytical instrumentation used: LC-MS-MS & GC-MS-MS; samples analyzed according to SOPs CO-PESTMYCO-LC-INST-004 and CO-PEST-GC-INST-004 and CO-PEST-GC-INST-003.



Infinite Chemical Analysis Labs  
8312 Miramar Mall  
San Diego, CA  
(858) 623-2740  
www.infiniteCAL.com  
Lic# C8-0000047-LIC

*Josh M Swider*

Josh Swider  
Lab Director, Managing Partner  
06/24/2024

Confident LIMS  
All Rights Reserved  
coa.support@confidentlims.com  
(866) 506-5866  
www.confidentlims.com



This product has been tested by Infinite Chemical Analysis Labs, LLC using validated testing methods and a quality control system as required by state law. Sample processing and testing was performed in accordance with CDPHE Colorado Wholesale Food, Industrial Hemp, and Shellfish Regulations (6 CCR 1010-21). Values reported relate only to the product tested. Infinite Chemical Analysis Labs, LLC makes no claims pertaining to the efficacy, safety, or other risks associated with any detected or non-detected levels of any compounds reported herein. This Certificate shall not be reproduced except in full without the written approval of Infinite Chemical Analysis Labs, LLC.



# Certificate of Analysis

CDPHE QA SAMPLE

4 of 4

ICAL ID: 20240618-019  
Sample: CA240618-006-012  
CKB37  
Strain: CKB37  
Category: Ingestible  
Type: Beverage

Climbing Kites, LLC  
Lic. #  
P.O. Box 655  
Salida, CO 81201  
Chill State Collective  
Lic. #  
2075 Ellis Ave. Saint Paul, MN 55114

Batch#: CKB37  
Batch Size Collected:  
Total Batch Size:  
Collected: 06/24/2024; Received: 06/24/2024  
Completed: 06/24/2024

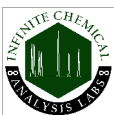
## Chemical Residue Screening

Analytes	LOQ				Limit	Status	Analytes	LOQ				Limit	Status
	µg/g	µg/g	µg/g	µg/g				µg/g	µg/g	µg/g	µg/g		
Abamectin	ND	0.030	0.010	0.300	0.300	Pass	Fludioxonil	ND	0.046	0.015	30.000	Pass	
Acephate	ND	0.050	0.016	5.000	5.000	Pass	Fluopyram	ND				Tested	
Acequinocyl	ND	0.059	0.019	4.000	4.000	Pass	Hexythiazox	ND	0.078	0.026	2.000	Pass	
Acetamiprid	ND	0.044	0.015	5.000	5.000	Pass	Imazalil	ND	0.047	0.016	0.016	Pass	
Aldicarb	ND	0.065	0.022	0.022	0.022	Pass	Imidacloprid	ND	0.071	0.023	3.000	Pass	
Allethrin	ND					Tested	Iprodione	ND				Tested	
Atrazine	ND					Tested	Kinoprene	ND				Tested	
Azadirachtin	ND					Tested	Kresoxim Methyl	ND	0.038	0.012	1.000	Pass	
Azoxystrobin	ND	0.029	0.010	40.000	40.000	Pass	Lambda-Cyhalothrin	ND				Tested	
Benzovindiflupyr	ND					Tested	Malathion	ND	0.035	0.012	5.000	Pass	
Bifenazate	ND	0.035	0.012	5.000	5.000	Pass	Metalaxyl	ND	0.031	0.010	15.000	Pass	
Bifenthrin	ND	0.040	0.013	0.500	0.500	Pass	Methiocarb	ND	0.047	0.016	0.016	Pass	
Boscalid	ND	0.060	0.020	10.000	10.000	Pass	Methomyl	ND	0.048	0.016	0.100	Pass	
Buprofezin	ND					Tested	Methoprene	ND				Tested	
Captan	ND	0.358	0.120	5.000	5.000	Pass	Mevinphos	ND	0.042	0.014	0.014	Pass	
Carbaryl	ND	0.049	0.016	0.500	0.500	Pass	MGK-264	ND				Tested	
Carbofuran	ND	0.030	0.009	0.009	0.009	Pass	Myclobutanil	ND	0.055	0.018	9.000	Pass	
Chlorantraniliprole	ND	0.063	0.021	40.000	40.000	Pass	Naled	ND	0.051	0.017	0.500	Pass	
Chlordane	ND	0.075	0.025	0.025	0.025	Pass	Novaluron	ND				Tested	
Chlorfenapyr	ND	0.075	0.025	0.025	0.025	Pass	Oxamyl	ND	0.046	0.015	0.300	Pass	
Chlorpyrifos	ND	0.053	0.018	0.018	0.018	Pass	Paclobutrazol	ND	0.040	0.013	0.013	Pass	
Clofentezine	ND	0.039	0.013	0.500	0.500	Pass	Parathion Methyl	ND	0.024	0.008	0.008	Pass	
Clothianidin	ND					Tested	Pentachloronitrobenzene	ND	0.054	0.018	0.200	Pass	
Coumaphos	ND	0.056	0.018	0.018	0.018	Pass	Permethrin	ND	0.030	0.008	20.000	Pass	
Cyantraniliprole	ND					Tested	Phenothrin	ND				Tested	
Cyfluthrin	ND	0.056	0.019	1.000	1.000	Pass	Phosmet	ND	0.038	0.012	0.200	Pass	
Cypermethrin	ND	0.044	0.015	1.000	1.000	Pass	Piperonyl Butoxide	ND	0.030	0.008	8.000	Pass	
Cyprodinil	ND					Tested	Pirimicarb	ND				Tested	
Daminozide	ND	0.079	0.026	0.026	0.026	Pass	Prallethrin	ND	0.068	0.023	0.400	Pass	
Deltamethrin	ND					Tested	Propiconazole	ND	0.059	0.019	20.000	Pass	
Diazinon	ND	0.030	0.006	0.200	0.200	Pass	Propoxur	ND	0.047	0.016	0.016	Pass	
Dichlorvos	ND	0.067	0.022	0.022	0.022	Pass	Pyraclostrobin	ND				Tested	
Dimethoate	ND	0.036	0.012	0.012	0.012	Pass	Pyrethrins	ND	0.030	0.004	1.000	Pass	
Dimethomorph	ND	0.042	0.014	20.000	20.000	Pass	Pyridaben	ND	0.035	0.012	3.000	Pass	
Dinotefuran	ND					Tested	Pyriproxifen	ND				Tested	
Diuron	ND					Tested	Resmethrin	ND				Tested	
Dodemorph	ND					Tested	Spinetoram	ND	0.030	0.006	3.000	Pass	
Endosulfan I	ND					Tested	Spinosad	ND	0.030	0.004	3.000	Pass	
Endosulfan II	ND					Tested	Spirodiclofen	ND				Tested	
Endosulfan Sulfate	ND					Tested	Spiromesifen	ND	0.042	0.014	12.000	Pass	
Ethoprophos	ND	0.053	0.017	0.017	0.017	Pass	Spirotetramat	ND	0.041	0.013	13.000	Pass	
Etofenprox	ND	0.030	0.008	0.008	0.008	Pass	Spiroxamine	ND	0.032	0.011	0.011	Pass	
Etoxazole	ND	0.030	0.008	1.500	1.500	Pass	Tebuconazole	ND	0.044	0.014	2.000	Pass	
Etridiazole	ND					Tested	Tebufenozide	ND				Tested	
Fenhexamid	ND	0.039	0.013	10.000	10.000	Pass	Teflubenzuron	ND				Tested	
Fenoxycarb	ND	0.043	0.014	0.014	0.014	Pass	Tetrachlorvinphos	ND				Tested	
Fenpyroximate	ND	0.030	0.010	2.000	2.000	Pass	Tetramethrin	ND				Tested	
Fensulfothion	ND					Tested	Thiabendazole	ND				Tested	
Fenthion	ND					Tested	Thiacloprid	ND	0.042	0.014	0.014	Pass	
Fenvalerate	ND					Tested	Thiamethoxam	ND	0.055	0.018	4.500	Pass	
Fipronil	ND	0.045	0.015	0.015	0.015	Pass	Thiophanate-Methyl	ND				Tested	
Flonicamid	ND	0.081	0.027	2.000	2.000	Pass	Trifloxystrobin	ND	0.031	0.010	30.000	Pass	

Mycotoxins	LOQ				Limit	Status	Mycotoxins	LOQ				Limit	Status
	µg/kg	µg/kg	µg/kg	µg/kg				µg/kg	µg/kg	µg/kg	µg/kg		
B1	ND	7.88	2.6			Tested	G2	ND	5.72	1.89		Tested	
B2	ND	6.18	2.04			Tested	Ochratoxin A	ND	11.72	3.87	20	Pass	
G1	ND	8.99	2.97			Tested	Total Aflatoxins	ND			20	Pass	

### Other Analyte(s):

NR = Not Reported (no analysis was performed), ND = Not Detected (the concentration is less than the Limit of Detection (LOD)). Analytical instrumentation used: LC-MS-MS & GC-MS-MS; samples analyzed according to SOPs CO-PESTMYCO-LC-INST-004 and CO-PEST-GC-INST-004 and CO-PEST-GC-INST-003.



Infinite Chemical Analysis Labs  
8312 Miramar Mall  
San Diego, CA  
(858) 623-2740  
www.infiniteCAL.com  
Lic# C8-000047-LIC

*Josh M Swider*

Josh Swider  
Lab Director, Managing Partner  
06/24/2024

Confident LIMS  
All Rights Reserved  
coa.support@confidentlims.com  
(866) 506-5866  
www.confidentlims.com



This product has been tested by Infinite Chemical Analysis Labs, LLC using validated testing methods and a quality control system as required by state law. Sample processing and testing was performed in accordance with CDPHE Colorado Wholesale Food, Industrial Hemp, and Shellfish Regulations (6 CCR 1010-21). Values reported relate only to the product tested. Infinite Chemical Analysis Labs, LLC makes no claims pertaining to the efficacy, safety, or other risks associated with any detected or non-detected levels of any compounds reported herein. This Certificate shall not be reproduced except in full without the written approval of Infinite Chemical Analysis Labs, LLC.