



# Certificate of Analysis

CDPHE QA SAMPLE

1 of 4

ICAL ID: 20241025-005a  
Sample: CA241025-011-057  
Pineapple Passion Fruit 2 serving/can  
Strain: Pineapple Passion Fruit 2 serving/can  
Category: Ingestible  
Type: Beverage

Climbing Kites, LLC  
Lic. #  
P.O. Box 655  
Salida, CO 81201  
Packaged at:  
Lic. #  
Spirited Brands 14155 W US 290 #200 Austin,  
Texas 78737 <https://www.canteenspirits.com/>

Batch#: 4297  
Batch Size Collected:  
Total Batch Size:  
Collected: 10/29/2024; Received: 10/29/2024  
Completed: 10/29/2024

Moisture NT	$\Delta$ 9-THC 5.34 mg/unit	CBD 5.22 mg/unit	Total Cannabinoids 10.56 mg/unit	Sum of Cannabinoids 10.56 mg/unit	Total Terpenes NT
Water Activity NT					

Summary	SOP Used	Date Tested	
Batch	POT-PREP-002	10/25/2024	Complete
Cannabinoids	MICRO-PREP-001		Complete
Microbials	PESTMICO-LC-PREP-001		Complete
Mycotoxins	HM-PREP-001		Complete
Heavy Metals	PESTMICO-LC-PREP-001 /		Complete
Pesticides	PEST-GC-PREP-001		Complete



Scan to see results

## Cannabinoid Profile

1 Unit = can, 357.98 g. 1 mL = 0.99652 g.

Analyte	LOQ (mg/g)	LOD (mg/g)	%	mg/g	mg/mL	mg/unit	Analyte	LOQ (mg/g)	LOD (mg/g)	%	mg/g	mg/mL	mg/unit
THCa	0.0128	0.0043	ND	ND	ND	ND	CBGa	0.0046	0.0015	ND	ND	ND	ND
$\Delta$ 9-THC	0.0046	0.0010	0.001	0.01	0.01	5.34	CBG	0.0046	0.0005	ND	ND	ND	ND
$\Delta$ 8-THC	0.0046	0.0014	ND	ND	ND	ND	CBN	0.0046	0.0005	ND	ND	ND	ND
THCV	0.0046	0.0006	ND	ND	ND	ND	<b>Total THC</b>			0.00	0.01	0.01	5.34
CBDa	0.0049	0.0016	ND	ND	ND	ND	<b>Total CBD</b>			0.00	0.01	0.01	5.22
CBD	0.0046	0.0008	0.001	0.01	0.01	5.22	<b>Total</b>			0.00	0.03	0.03	10.56
CBDV	0.0046	0.0004	ND	ND	ND	ND	<b>Sum of</b>			0.00	0.03	0.03	10.56
CBC	0.0076	0.0025	ND	ND	ND	ND	<b>Cannabinoids</b>			0.00	0.03	0.03	10.56

Total THC = THCa \* 0.877 +  $\Delta$ 9-THC; Total CBD = CBDa \* 0.877 + CBD. NR = Not Reported, ND = Not Detected. Potency is reported on a dry weight basis. Instrumentation and analysis SOPs used: Cannabinoids: UHPLC-DAD (POT-INST-005), Moisture: Moisture Analyzer (MOISTURE-001). The measurement of uncertainty for total THC concentration is  $\pm$  0.009%.

## Terpene Profile

Analyte	LOQ (mg/g)	LOD (mg/g)	%	mg/g	Analyte	LOQ (mg/g)	LOD (mg/g)	%	mg/g
---------	------------	------------	---	------	---------	------------	------------	---	------

NR = Not Reported (no analysis was performed); ND = Not Detected (the concentration is less than the Limit of Detection (LOD)). Analytical instrumentation used: HS-GC-MS; samples analyzed according to SOP CO-TERP-INST-003.



Infinite Chemical Analysis Labs  
8312 Miramar Mall  
San Diego, CA  
(858) 623-2740  
[www.infiniteCAL.com](http://www.infiniteCAL.com)  
Lic# C8-000047-LIC

*Josh M Swider*

Josh Swider  
Lab Director, Managing Partner  
10/29/2024

Confident LIMS  
All Rights Reserved  
[coa.support@confidentlims.com](mailto:coa.support@confidentlims.com)  
(866) 506-5866  
[www.confidentlims.com](http://www.confidentlims.com)



This product has been tested by Infinite Chemical Analysis Labs, LLC using validated testing methods and a quality control system as required by state law. Sample processing and testing was performed in accordance with CDPHE Colorado Wholesale Food, Industrial Hemp, and Shellfish Regulations (6 CCR 1010-21). Values reported relate only to the product tested. Infinite Chemical Analysis Labs, LLC makes no claims pertaining to the efficacy, safety, or other risks associated with any detected or non-detected levels of any compounds reported herein. This Certificate shall not be reproduced except in full without the written approval of Infinite Chemical Analysis Labs, LLC.



# Certificate of Analysis

CDPHE QA SAMPLE

2 of 4

ICAL ID: 20241025-005a  
Sample: CA241025-011-057  
Pineapple Passion Fruit 2 serving/can  
Strain: Pineapple Passion Fruit 2 serving/can  
Category: Ingestible  
Type: Beverage

Climbing Kites, LLC  
Lic. #  
P.O. Box 655  
Salida, CO 81201  
Packaged at:  
Lic. #  
Spirited Brands 14155 W US 290 #200 Austin,  
Texas 78737 <https://www.canteenspirits.com/>

Batch#: 4297  
Batch Size Collected:  
Total Batch Size:  
Collected: 10/29/2024; Received: 10/29/2024  
Completed: 10/29/2024

## Residual Solvent Analysis

Category 1	LOQ	LOD	Limit	Status	Category 2	LOQ	LOD	Limit	Status	Category 2	LOQ	LOD	Limit	Status
------------	-----	-----	-------	--------	------------	-----	-----	-------	--------	------------	-----	-----	-------	--------

NR = Not Reported (no analysis was performed), ND = Not Detected (the concentration is less than the Limit of Detection (LOD)). Analytical instrumentation used: HS-GC-MS; samples analyzed according to SOP CO-RS-INST-003.

## Heavy Metal Screening

		LOQ	LOD	Limit	Status
	µg/g	µg/g	µg/g	µg/g	
Arsenic	NR	0.009	0.003	1.5	NT
Cadmium	NR	0.002	0.001	0.5	NT
Lead	NR	0.004	0.001	0.5	NT
Mercury	NR	0.014	0.005	3	NT

NR = Not Reported (no analysis was performed), ND = Not Detected (the concentration is less than the Limit of Detection (LOD)). Analytical instrumentation used: ICP-MS; samples analyzed according to SOP CO-HM-INST-003.

## Microbiological Screening

	Limit	Result	Status
	CFU/g	CFU/g	
Salmonella SPP		NR	NT
STEC		NR	NT
Total Coliforms	100	NR	NT
Total Aerobic Plate Count	10000	NR	NT
Total Yeast and Mold	1000	NR	NT

ND=Not Detected. Analytical instrumentation used:qPCR and microbial plating; samples analyzed according to SOPs CO-MICRO-PREP-001 and CO-MICRO-PLATE-001.



Infinite Chemical Analysis Labs  
8312 Miramar Mall  
San Diego, CA  
(858) 623-2740  
[www.infiniteCAL.com](http://www.infiniteCAL.com)  
Lic# C8-000047-LIC

*Josh M Swider*

Josh Swider  
Lab Director, Managing Partner  
10/29/2024

Confident LIMS  
All Rights Reserved  
[coa.support@confidentlims.com](mailto:coa.support@confidentlims.com)  
(866) 506-5866  
[www.confidentlims.com](http://www.confidentlims.com)



This product has been tested by Infinite Chemical Analysis Labs, LLC using validated testing methods and a quality control system as required by state law. Sample processing and testing was performed in accordance with CDPHE Colorado Wholesale Food, Industrial Hemp, and Shellfish Regulations (6 CCR 1010-21). Values reported relate only to the product tested. Infinite Chemical Analysis Labs, LLC makes no claims pertaining to the efficacy, safety, or other risks associated with any detected or non-detected levels of any compounds reported herein. This Certificate shall not be reproduced except in full without the written approval of Infinite Chemical Analysis Labs, LLC.



# Certificate of Analysis

CDPHE QA SAMPLE

3 of 4

ICAL ID: 20241025-005a  
Sample: CA241025-011-057  
Pineapple Passion Fruit 2 serving/can  
Strain: Pineapple Passion Fruit 2 serving/can  
Category: Ingestible  
Type: Beverage

Climbing Kites, LLC  
Lic. #  
P.O. Box 655  
Salida, CO 81201  
Packaged at:  
Lic. #  
Spirited Brands 14155 W US 290 #200 Austin,  
Texas 78737 <https://www.canteenspirits.com/>

Batch#: 4297  
Batch Size Collected:  
Total Batch Size:  
Collected: 10/29/2024; Received: 10/29/2024  
Completed: 10/29/2024

## Chemical Residue Screening

Category 1	LOQ	LOD	Status	Mycotoxins	LOQ	LOD	Limit	Status		
	µg/g	µg/g	µg/g		µg/kg	µg/kg	µg/kg			
Aldicarb	NR	0.065	0.022	NT	B1	NR	7.88	2.6	NT	
Carbofuran	NR	0.030	0.009	NT	B2	NR	6.18	2.04	NT	
Chlorfenapyr	NR	0.075	0.025	NT	G1	NR	8.99	2.97	NT	
Chlorpyrifos	NR	0.053	0.018	NT	G2	NR	5.72	1.89	NT	
Coumaphos	NR	0.056	0.018	NT	Ochratoxin A	NR	11.72	3.87	20	NT
Daminozide	NR	0.079	0.026	NT	Total Aflatoxins	NR		20	NT	
Dichlorvos	NR	0.067	0.022	NT						
Dimethoate	NR	0.036	0.012	NT						
Ethoprophos	NR	0.053	0.017	NT						
Etofenprox	NR	0.030	0.008	NT						
Fenoxycarb	NR	0.043	0.014	NT						
Fipronil	NR	0.045	0.015	NT						
Imazalil	NR	0.047	0.016	NT						
Methiocarb	NR	0.047	0.016	NT						
Mevinphos	NR	0.042	0.014	NT						
MGK-264	NR			NT						
Paclobutrazol	NR	0.040	0.013	NT						
Parathion Methyl	NR	0.024	0.008	NT						
Propoxur	NR	0.047	0.016	NT						
Spiroxamine	NR	0.032	0.011	NT						
Thiacloprid	NR	0.042	0.014	NT						

Category 2	LOQ	LOD	Limit	Status	Category 2	LOQ	LOD	Limit	Status		
	µg/g	µg/g	µg/g	µg/g		µg/g	µg/g	µg/g	µg/g		
Abamectin	NR	0.030	0.010	0.3	NT	Kresoxim Methyl	NR	0.038	0.012	1	NT
Acephate	NR	0.050	0.016	5	NT	Malathion	NR	0.035	0.012	5	NT
Acequinocyl	NR	0.059	0.019	4	NT	Metalaxyl	NR	0.031	0.010	15	NT
Acetamiprid	NR	0.044	0.015	5	NT	Methomyl	NR	0.048	0.016	0.1	NT
Azoxystrobin	NR	0.029	0.010	40	NT	Myclobutanil	NR	0.055	0.018	9	NT
Bifenazate	NR	0.035	0.012	5	NT	Naled	NR	0.051	0.017	0.5	NT
Bifenthrin	NR	0.040	0.013	0.5	NT	Oxamyl	NR	0.046	0.015	0.3	NT
Boscalid	NR	0.060	0.020	10	NT	Pentachloronitrobenzene	NR	0.054	0.018	0.2	NT
Carbaryl	NR	0.049	0.016	0.5	NT	Permethrin	NR	0.030	0.008	20	NT
Chlorantraniliprole	NR	0.063	0.021	40	NT	Phosmet	NR	0.038	0.012	0.2	NT
Clofentezine	NR	0.039	0.013	0.5	NT	Piperonyl Butoxide	NR	0.030	0.008	8	NT
Cyfluthrin	NR	0.056	0.019	1	NT	Prallethrin	NR	0.068	0.023	0.4	NT
Cypermethrin	NR	0.044	0.015	1	NT	Propiconazole	NR	0.059	0.019	20	NT
Diazinon	NR	0.030	0.006	0.2	NT	Pyrethrins	NR	0.030	0.004	1	NT
Dimethomorph	NR	0.042	0.014	20	NT	Pyridaben	NR	0.035	0.012	3	NT
Etoxazole	NR	0.030	0.008	1.5	NT	Spinetoram	NR	0.030	0.006	3	NT
Fenhexamid	NR	0.039	0.013	10	NT	Spinosad	NR	0.030	0.004	3	NT
Fenpyroximate	NR	0.030	0.010	2	NT	Spiromesifen	NR	0.042	0.014	12	NT
Flonicamid	NR	0.081	0.027	2	NT	Spirotetramat	NR	0.041	0.013	13	NT
Fludioxonil	NR	0.046	0.015	30	NT	Tebuconazole	NR	0.044	0.014	2	NT
Hexythiazox	NR	0.078	0.026	2	NT	Thiamethoxam	NR	0.055	0.018	4.5	NT
Imidacloprid	NR	0.071	0.023	3	NT	Trifloxystrobin	NR	0.031	0.010	30	NT

### Other Analyte(s):

NR = Not Reported (no analysis was performed), ND = Not Detected (the concentration is less than the Limit of Detection (LOD)). Analytical instrumentation used: LC-MS-MS & GC-MS-MS; samples analyzed according to SOPs CO-PESTMYCO-LC-INST-004 and CO-PEST-GC-INST-004 and CO-PEST-GC-INST-003.



Infinite Chemical Analysis Labs  
8312 Miramar Mall  
San Diego, CA  
(858) 623-2740  
[www.infiniteCAL.com](http://www.infiniteCAL.com)  
Lic# C8-0000047-LIC

*Josh M Swider*

Josh Swider  
Lab Director, Managing Partner  
10/29/2024

Confident LIMS  
All Rights Reserved  
[coa.support@confidentlims.com](mailto:coa.support@confidentlims.com)  
(866) 506-5866  
[www.confidentlims.com](http://www.confidentlims.com)



This product has been tested by Infinite Chemical Analysis Labs, LLC using validated testing methods and a quality control system as required by state law. Sample processing and testing was performed in accordance with CDPHE Colorado Wholesale Food, Industrial Hemp, and Shellfish Regulations (6 CCR 1010-21). Values reported relate only to the product tested. Infinite Chemical Analysis Labs, LLC makes no claims pertaining to the efficacy, safety, or other risks associated with any detected or non-detected levels of any compounds reported herein. This Certificate shall not be reproduced except in full without the written approval of Infinite Chemical Analysis Labs, LLC.



# Certificate of Analysis

CDPHE QA SAMPLE

4 of 4

ICAL ID: 20241025-005a  
 Sample: CA241025-011-057  
 Pineapple Passion Fruit 2 serving/can  
 Strain: Pineapple Passion Fruit 2 serving/can  
 Category: Ingestible  
 Type: Beverage

Climbing Kites, LLC  
 Lic. #  
 P.O. Box 655  
 Salida, CO 81201  
 Packaged at:  
 Lic. #  
 Spirited Brands 14155 W US 290 #200 Austin,  
 Texas 78737 <https://www.canteenspirits.com/>

Batch#: 4297  
 Batch Size Collected:  
 Total Batch Size:  
 Collected: 10/29/2024; Received: 10/29/2024  
 Completed: 10/29/2024

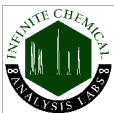
## Chemical Residue Screening

Analytes	LOQ	LOD	Limit	Status	Analytes	LOQ	LOD	Limit	Status
----------	-----	-----	-------	--------	----------	-----	-----	-------	--------

Mycotoxins		LOQ	LOD	Limit	Status	Mycotoxins		LOQ	LOD	Limit	Status
	µg/kg	µg/kg	µg/kg	µg/kg			µg/kg	µg/kg	µg/kg	µg/kg	
B1	NR	7.88	2.6		NT	G2	NR	5.72	1.89		NT
B2	NR	6.18	2.04		NT	Ochratoxin A	NR	11.72	3.87	20	NT
G1	NR	8.99	2.97		NT	Total Aflatoxins	NR			20	NT

### Other Analyte(s):

NR = Not Reported (no analysis was performed), ND = Not Detected (the concentration is less than the Limit of Detection (LOD)). Analytical instrumentation used: LC-MS-MS & GC-MS-MS; samples analyzed according to SOPs CO-PESTMYCO-LC-INST-004 and CO-PEST-GC-INST-004 and CO-PEST-GC-INST-003.



Infinite Chemical Analysis Labs  
 8312 Miramar Mall  
 San Diego, CA  
 (858) 623-2740  
[www.infiniteCAL.com](http://www.infiniteCAL.com)  
 Lic# C8-000047-LIC

*Josh M Swider*

Josh Swider  
 Lab Director, Managing Partner  
 10/29/2024

Confident LIMS  
 All Rights Reserved  
[coa.support@confidentlims.com](mailto:coa.support@confidentlims.com)  
 (866) 506-5866  
[www.confidentlims.com](http://www.confidentlims.com)



This product has been tested by Infinite Chemical Analysis Labs, LLC using validated testing methods and a quality control system as required by state law. Sample processing and testing was performed in accordance with CDPHE Colorado Wholesale Food, Industrial Hemp, and Shellfish Regulations (6 CCR 1010-21). Values reported relate only to the product tested. Infinite Chemical Analysis Labs, LLC makes no claims pertaining to the efficacy, safety, or other risks associated with any detected or non-detected levels of any compounds reported herein. This Certificate shall not be reproduced except in full without the written approval of Infinite Chemical Analysis Labs, LLC.