



Certificate of Analysis

CDPHE QA SAMPLE

1 of 4

ICAL ID: 20241024-016b
Sample: CA241025-010-042
Pineapple Pineapple Passion Fruit 5mg 2 serving/can
Strain: Pineapple Passion Fruit 5mg 2 serving/can
Category: Ingestible
Type: Beverage

Climbing Kites, LLC
Lic. #
P.O. Box 655
Salida, CO 81201
Packaged at:
Lic. #
Spirited Brands 14155 W US 290 #200 Austin, Texas 78737 <https://www.canteenspirits.com/>

Batch#: 4295
Batch Size Collected:
Total Batch Size:
Collected: 11/05/2024; Received: 11/05/2024
Completed: 11/05/2024

Moisture NT	Δ9-THC 5.47 mg/unit	CBD 5.44 mg/unit	Total Cannabinoids 10.91 mg/unit	Sum of Cannabinoids 10.91 mg/unit	Total Terpenes NT
Water Activity NT					

Summary	SOP Used	Date Tested	
Batch	POT-PREP-002	10/25/2024	Pass
Cannabinoids	MICRO-PREP-001	10/30/2024	Complete
Microbials	PESTMICO-LC-PREP-001	10/30/2024	Pass
Mycotoxins	HM-PREP-001	10/29/2024	Pass
Heavy Metals	FM-PREP-001	10/25/2024	Pass
Foreign Matter	CO-PESTMICO-LC-PREP-001 / CO-PEST-GC-PREP-001	10/29/2024	Pass
Pesticides			Pass



Scan to see results

Cannabinoid Profile

1 Unit = can, 358.63 g. 1 mL = 0.99 g.

Analyte	LOQ (mg/g)	LOD (mg/g)	%	mg/g	mg/mL	mg/unit	Analyte	LOQ (mg/g)	LOD (mg/g)	%	mg/g	mg/mL	mg/unit
THCa	0.0128	0.0043	ND	ND	ND	ND	CBGa	0.0046	0.0015	ND	ND	ND	ND
Δ9-THC	0.0046	0.0010	0.002	0.02	0.02	5.47	CBG	0.0046	0.0005	ND	ND	ND	ND
Δ8-THC	0.0046	0.0014	ND	ND	ND	ND	CBN	0.0046	0.0005	ND	ND	ND	ND
THCV	0.0046	0.0006	ND	ND	ND	ND	Total THC			0.00	0.02	0.02	5.47
CBDa	0.0049	0.0016	ND	ND	ND	ND	Total CBD			0.00	0.02	0.02	5.44
CBD	0.0046	0.0008	0.002	0.02	0.02	5.44	Total			0.00	0.03	0.03	10.91
CBDV	0.0046	0.0004	ND	ND	ND	ND	Sum of Cannabinoids			0.00	0.03	0.03	10.91
CBC	0.0076	0.0025	ND	ND	ND	ND							

Total THC = THCa * 0.877 + Δ9-THC; Total CBD = CBDa * 0.877 + CBD. NR = Not Reported, ND = Not Detected. Potency is reported on a dry weight basis. Instrumentation and analysis SOPs used: Cannabinoids: UHPLC-DAD (POT-INST-005), Moisture: Moisture Analyzer (MOISTURE-001). The measurement of uncertainty for total THC concentration is ± 0.009%.

Terpene Profile

Analyte	LOQ (mg/g)	LOD (mg/g)	%	mg/g	Analyte	LOQ (mg/g)	LOD (mg/g)	%	mg/g
---------	------------	------------	---	------	---------	------------	------------	---	------

NR = Not Reported (no analysis was performed); ND = Not Detected (the concentration is less than the Limit of Detection (LOD)). Analytical instrumentation used: HS-GC-MS; samples analyzed according to SOP CO-TERP-INST-003.



Infinite Chemical Analysis Labs
8312 Miramar Mall
San Diego, CA
(858) 623-2740
www.infiniteCAL.com
Lic# C8-0000047-LIC

Josh M Swider

Josh Swider
Lab Director, Managing Partner
11/05/2024

Confident LIMS
All Rights Reserved
coa.support@confidentlims.com
(866) 506-5866
www.confidentlims.com



This product has been tested by Infinite Chemical Analysis Labs, LLC using validated testing methods and a quality control system as required by state law. Sample processing and testing was performed in accordance with CDPHE Colorado Wholesale Food, Industrial Hemp, and Shellfish Regulations (6 CCR 1010-21). Values reported relate only to the product tested. Infinite Chemical Analysis Labs, LLC makes no claims pertaining to the efficacy, safety, or other risks associated with any detected or non-detected levels of any compounds reported herein. This Certificate shall not be reproduced except in full without the written approval of Infinite Chemical Analysis Labs, LLC.



Certificate of Analysis

QA SAMPLE - INFORMATIONAL ONLY

2 of 3

ICAL ID: 20241024-016b
Sample: CA241025-010-042
Pineapple Passion Fruit 5mg 2 serving/can
Passion Fruit 5mg 2 serving/can
Strain: Pineapple Passion Fruit 5mg 2 serving/can
Category: Ingestible
Type: Beverage

Climbing Kites, LLC
Lic. #
P.O. Box 655
Salida, CO 81201
Packaged at:
Lic. #
Spirited Brands 14155 W US 290 #200 Austin,
Texas 78737 <https://www.canteenspirits.com/>

Batch#: 4295
Batch Size Collected:
Total Batch Size:
Collected: 11/05/2024; Received: 11/05/2024
Completed: 11/05/2024

Residual Solvent Analysis

Category 1	LOQ	LOD	Limit	Status	Category 2	LOQ	LOD	Limit	Status	Category 2	LOQ	LOD	Limit	Status
------------	-----	-----	-------	--------	------------	-----	-----	-------	--------	------------	-----	-----	-------	--------

NR= Not Reported (no analysis was performed), ND= Not Detected (the concentration is less then the Limit of Detection (LOD)). Analytical instrumentation used: HS-GC-MS; samples analyzed according to SOP RS-INST-003.

Heavy Metal Screening

	LOQ	LOD	Limit	Status	
	µg/g	µg/g	µg/g		
Arsenic	ND	0.009	0.003	1.5	Pass
Cadmium	ND	0.002	0.001	0.5	Pass
Lead	<LOQ	0.004	0.001	0.5	Pass
Mercury	ND	0.014	0.005	3	Pass

NR= Not Reported (no analysis was performed), ND= Not Detected (the concentration is less then the Limit of Detection (LOD)). Analytical instrumentation used: ICP-MS; samples analyzed according to SOP HM-INST-003.

Microbiological Screening

	Limit	Result	Status
	CFU/g	CFU/g	
Total Aerobic Plate Count	10000	10	Pass
Aspergillus flavus		Not Detected	Pass
Aspergillus fumigatus		Not Detected	Pass
Aspergillus niger		Not Detected	Pass
Aspergillus terreus		Not Detected	Pass
Total Coliforms	100	ND	Pass
STEC		Not Detected	Pass
Enterobacteriaceae		NR	NT
Listeria		NR	NT
Pseudomonas aeruginosa		NR	NT
Salmonella SPP		Not Detected	Pass
Total E. coli		NR	NT
Staphylococcus aureus		NR	NT
Total Yeast and Mold	1000	ND	Pass

ND=Not Detected. Analytical instrumentation used:qPCR; samples analyzed according to SOP MICRO-INST-001.



Infinite Chemical Analysis Labs
8312 Miramar Mall
San Diego, CA
(858) 623-2740
www.infiniteCAL.com
Lic# C8-0000047-LIC

Josh M Swider

Josh Swider
Lab Director, Managing Partner
11/05/2024

Confident LIMS
All Rights Reserved
coa.support@confidentlims.com
(866) 506-5866
www.confidentlims.com



This product has been tested by Infinite Chemical Analysis, LLC using valid testing methodologies and a quality system as required by state law. All LQC samples were performed and met the prescribed acceptance criteria in 16 CCR section 15730, pursuant to 16 CCR section 15726(e)(13). Values reported relate only to the product tested. Infinite Chemical Analysis, LLC makes no claims as to the efficacy, safety or other risks associated with any detected or non-detected levels of any compounds reported herein. This Certificate shall not be reproduced except in full, without the written approval of Infinite Chemical Analysis, LLC.



Certificate of Analysis

CDPHE QA SAMPLE

3 of 4

ICAL ID: 20241024-016b
 Sample: CA241025-010-042
 Pineapple Passion Fruit 5mg 2 serving/can
 Strain: Pineapple Passion Fruit 5mg 2 serving/can
 Category: Ingestible
 Type: Beverage

Climbing Kites, LLC
 Lic. #
 P.O. Box 655
 Salida, CO 81201
 Packaged at:
 Lic. #
 Spirited Brands 14155 W US 290 #200 Austin,
 Texas 78737 <https://www.canteenspirits.com/>

Batch#: 4295
 Batch Size Collected:
 Total Batch Size:
 Collected: 11/05/2024; Received: 11/05/2024
 Completed: 11/05/2024

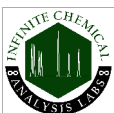
Chemical Residue Screening

Category 1	LOQ	LOD	Status	Mycotoxins	LOQ	LOD	Limit	Status		
	µg/g	µg/g	µg/g		µg/kg	µg/kg	µg/kg			
Aldicarb	ND	0.030	0.010	Pass	B1	ND	7.88	2.6	Tested	
Carbofuran	ND	0.010	0.005	Pass	B2	ND	6.18	2.04	Tested	
Chlorfenapyr	ND	0.024	0.008	Pass	G1	ND	8.99	2.97	Tested	
Chlorpyrifos	ND	0.075	0.010	Pass	G2	ND	5.72	1.89	Tested	
Coumaphos	ND	0.010	0.005	Pass	Ochratoxin A	ND	11.72	3.87	20	Pass
Daminozide	ND	0.075	0.050	Pass	Total Aflatoxins	ND		20	Pass	
Dichlorvos	ND	0.050	0.020	Pass						
Dimethoate	ND	0.010	0.005	Pass						
Ethoprophos	ND	0.010	0.005	Pass						
Etofenprox	ND	0.030	0.010	Pass						
Fenoxycarb	ND	0.010	0.005	Pass						
Fipronil	ND	0.010	0.005	Pass						
Imazalil	ND	0.010	0.005	Pass						
Methiocarb	ND	0.010	0.005	Pass						
Mevinphos	ND	0.025	0.010	Pass						
MGK-264	ND	0.016	0.005	Pass						
Paclbutrazol	ND	0.010	0.005	Pass						
Parathion Methyl	ND	0.026	0.009	Pass						
Propoxur	ND	0.010	0.005	Pass						
Spiroxamine	ND	0.030	0.020	Pass						
Thiacloprid	ND	0.010	0.005	Pass						

Category 2	LOQ	LOD	Limit	Status	Category 2	LOQ	LOD	Limit	Status		
	µg/g	µg/g	µg/g	µg/g		µg/g	µg/g	µg/g	µg/g		
Abamectin	ND	0.100	0.050	0.25	Pass	Kresoxim Methyl	ND	0.030	0.010	0.15	Pass
Acephate	ND	0.030	0.010	0.05	Pass	Malathion	ND	0.010	0.005	0.01	Pass
Acequinocyl	ND	0.075	0.020	0.075	Pass	Metalaxyl	ND	0.010	0.005	0.01	Pass
Acetamiprid	ND	0.030	0.010	0.05	Pass	Methomyl	ND	0.025	0.010	0.025	Pass
Azoxystrobin	ND	0.010	0.005	0.01	Pass	Myclobutanil	ND	0.010	0.005	0.01	Pass
Bifenazate	ND	0.010	0.005	0.01	Pass	Naled	ND	0.030	0.020	0.03	Pass
Bifenthrin	ND	0.030	0.005	0.03	Pass	Oxamyl	ND	0.030	0.020	1.5	Pass
Boscalid	ND	0.010	0.005	0.01	Pass	Pentachloronitrobenzene	ND	0.016	0.005	0.016	Pass
Carbaryl	ND	0.025	0.010	0.025	Pass	Permethrin	ND	0.030	0.020	0.03	Pass
Chlorantraniliprole	ND	0.030	0.010	0.03	Pass	Phosmet	ND	0.030	0.020	0.03	Pass
Clofentezine	ND	0.010	0.005	0.01	Pass	Piperonyl Butoxide	ND	0.030	0.010	1.25	Pass
Cyfluthrin	ND	0.038	0.013	0.0384	Pass	Prallethrin	ND	0.075	0.030	0.075	Pass
Cypermethrin	ND	0.053	0.018	0.0525	Pass	Propiconazole	ND	0.030	0.010	0.03	Pass
Diazinon	ND	0.030	0.010	0.03	Pass	Pyrethrins	ND	0.045	0.010	0.045	Pass
Dimethomorph	ND	0.030	0.010	0.03	Pass	Pyridaben	ND	0.020	0.010	0.02	Pass
Etoxazole	ND	0.030	0.010	0.03	Pass	Spinetoram	ND	0.010	0.005	0.01	Pass
Fenhexamid	ND	0.045	0.020	0.045	Pass	Spinosad	ND	0.010	0.005	0.01	Pass
Fenpyroximate	ND	0.030	0.010	0.03	Pass	Spiromesifen	ND	0.030	0.010	0.03	Pass
Flonicamid	ND	0.025	0.010	0.025	Pass	Spirotetramat	ND	0.010	0.005	0.01	Pass
Fludioxonil	ND	0.010	0.005	0.01	Pass	Tebuconazole	ND	0.010	0.005	0.01	Pass
Hexythiazox	ND	0.030	0.010	0.03	Pass	Thiamethoxam	ND	0.010	0.005	0.01	Pass
Imidacloprid	ND	0.010	0.005	0.01	Pass	Trifloxystrobin	ND	0.010	0.005	0.01	Pass

Other Analyte(s):

NR = Not Reported (no analysis was performed), ND = Not Detected (the concentration is less than the Limit of Detection (LOD)). Analytical instrumentation used: LC-MS-MS & GC-MS-MS; samples analyzed according to SOPs CO-PESTMYCO-LC-INST-004 and CO-PEST-GC-INST-004 and CO-PEST-GC-INST-003.



Infinite Chemical Analysis Labs
 8312 Miramar Mall
 San Diego, CA
 (858) 623-2740
 www.infiniteCAL.com
 Lic# C8-000047-LIC

Josh M Swider

Josh Swider
 Lab Director, Managing Partner
 11/05/2024

Confident LIMS
 All Rights Reserved
 coa.support@confidentlims.com
 (866) 506-5866
 www.confidentlims.com



This product has been tested by Infinite Chemical Analysis Labs, LLC using validated testing methods and a quality control system as required by state law. Sample processing and testing was performed in accordance with CDPHE Colorado Wholesale Food, Industrial Hemp, and Shellfish Regulations (6 CCR 1010-21). Values reported relate only to the product tested. Infinite Chemical Analysis Labs, LLC makes no claims pertaining to the efficacy, safety, or other risks associated with any detected or non-detected levels of any compounds reported herein. This Certificate shall not be reproduced except in full without the written approval of Infinite Chemical Analysis Labs, LLC.



Certificate of Analysis

CDPHE QA SAMPLE

4 of 4

ICAL ID: 20241024-016b
Sample: CA241025-010-042
Pineapple Pineapple Passion Fruit 5mg 2 serving/can
Passion Fruit 5mg 2 serving/can
Strain: Pineapple Passion Fruit 5mg 2 serving/can
Category: Ingestible
Type: Beverage

Climbing Kites, LLC
Lic. #
P.O. Box 655
Salida, CO 81201
Packaged at:
Lic. #
Spirited Brands 14155 W US 290 #200 Austin,
Texas 78737 <https://www.canteenspirits.com/>

Batch#: 4295
Batch Size Collected:
Total Batch Size:
Collected: 11/05/2024; Received: 11/05/2024
Completed: 11/05/2024

Chemical Residue Screening

Analytes	LOQ	LOD	Limit	Status	Analytes	LOQ	LOD	Limit	Status		
	µg/g	µg/g	µg/g			µg/g	µg/g	µg/g			
Abamectin	ND	0.100	0.050	0.250	Pass	Fluopyram	ND	0.005	0.005	0.010	Pass
Acephate	ND	0.030	0.010	0.050	Pass	Hexythiazox	ND	0.030	0.010	0.030	Pass
Acequinocyl	ND	0.075	0.020	0.075	Pass	Imazalil	ND	0.010	0.005	0.010	Pass
Acetamiprid	ND	0.030	0.010	0.050	Pass	Imidacloprid	ND	0.010	0.005	0.010	Pass
Aldicarb	ND	0.030	0.010	0.500	Pass	Iprodione	ND	0.475	0.158	0.500	Pass
Allethrin	ND	0.030	0.015	0.100	Pass	Kinoprene	ND	0.221	0.074	1.250	Pass
Atrazine	ND	0.005	0.005	0.005	Pass	Kresoxim Methyl	ND	0.030	0.010	0.150	Pass
Azadirachtin	ND	0.050	0.030	0.500	Pass	Lambda-Cyhalothrin	ND	0.050	0.030	0.050	Pass
Azoxystrobin	ND	0.010	0.005	0.010	Pass	Malathion	ND	0.010	0.005	0.010	Pass
Benzovindiflupyr	ND	0.005	0.005	0.010	Pass	Metalaxyl	ND	0.010	0.005	0.010	Pass
Bifenazate	ND	0.010	0.005	0.010	Pass	Methiocarb	ND	0.010	0.005	0.010	Pass
Bifenthrin	ND	0.030	0.005	0.030	Pass	Methomyl	ND	0.025	0.010	0.025	Pass
Boscalid	ND	0.010	0.005	0.010	Pass	Methoprene	ND	0.050	0.025	0.050	Pass
Buprofezin	ND	0.030	0.015	0.030	Pass	Mevinphos	ND	0.025	0.010	0.025	Pass
Carbaryl	ND	0.025	0.010	0.025	Pass	MGK-264	ND	0.016	0.005	0.050	Pass
Carbofuran	ND	0.010	0.005	0.010	Pass	Myclobutanil	ND	0.010	0.005	0.010	Pass
Chlorantraniliprole	ND	0.030	0.010	0.030	Pass	Naled	ND	0.030	0.020	0.030	Pass
Chlorfenapyr	ND	0.024	0.008	1.500	Pass	Novaluron	ND	0.020	0.010	0.025	Pass
Chlorpyrifos	ND	0.075	0.010	0.500	Pass	Oxamyl	ND	0.030	0.020	1.500	Pass
Clofentezine	ND	0.010	0.005	0.010	Pass	Paclobutrazol	ND	0.010	0.005	0.010	Pass
Clothianidin	ND	0.010	0.005	0.025	Pass	Parathion Methyl	ND	0.026	0.009	0.026	Pass
Coumaphos	ND	0.010	0.005	0.010	Pass	Pentachloronitrobenzene	ND	0.016	0.005	0.016	Pass
Cyantraniliprole	ND	0.010	0.005	0.010	Pass	Permethrin	ND	0.030	0.020	0.030	Pass
Cyfluthrin	ND	0.038	0.013	0.038	Pass	Phenothrin	ND	0.030	0.015	0.030	Pass
Cypermethrin	ND	0.053	0.018	0.053	Pass	Phosmet	ND	0.030	0.020	0.030	Pass
Cyprodinil	ND	0.010	0.005	0.010	Pass	Piperonyl Butoxide	ND	0.030	0.010	1.250	Pass
Daminozide	ND	0.075	0.050	0.075	Pass	Pirimicarb	ND	0.010	0.005	0.010	Pass
Deltamethrin	ND	0.050	0.025	0.050	Pass	Prallethrin	ND	0.075	0.030	0.075	Pass
Diazinon	ND	0.030	0.010	0.030	Pass	Propiconazole	ND	0.030	0.010	0.030	Pass
Dichlorvos	ND	0.050	0.020	0.050	Pass	Propoxur	ND	0.010	0.005	0.010	Pass
Dimethoate	ND	0.010	0.005	0.010	Pass	Pyraclostrobin	ND	0.010	0.005	0.010	Pass
Dimethomorph	ND	0.030	0.010	0.030	Pass	Pyrethrins	ND	0.045	0.010	0.045	Pass
Dinotefuran	ND	0.050	0.025	0.050	Pass	Pyridaben	ND	0.020	0.010	0.020	Pass
Diuron	ND	0.010	0.005	0.010	Pass	Pyriproxifen	ND	0.010	0.005	0.010	Pass
Dodemorph	ND	0.020	0.010	0.020	Pass	Resmethrin	ND	0.050	0.025	0.050	Pass
Endosulfan I	ND	0.353	0.118	2.500	Pass	Spinetoram	ND	0.010	0.005	0.010	Pass
Endosulfan II	ND	0.239	0.080	2.500	Pass	Spinosad	ND	0.010	0.005	0.010	Pass
Endosulfan Sulfate	ND	0.026	0.009	2.500	Pass	Spirodiclofen	ND	0.050	0.025	0.050	Pass
Ethoprophos	ND	0.010	0.005	0.010	Pass	Spiromesifen	ND	0.030	0.010	0.030	Pass
Etofenprox	ND	0.030	0.010	0.030	Pass	Spirotetramat	ND	0.010	0.005	0.010	Pass
Etoxazole	ND	0.030	0.010	0.030	Pass	Spiroxamine	ND	0.030	0.020	0.030	Pass
Etridiazole	ND	0.044	0.015	0.150	Pass	Tebuconazole	ND	0.010	0.005	0.010	Pass
Fenhexamid	ND	0.045	0.020	0.045	Pass	Tebufenozide	ND	0.010	0.005	0.010	Pass
Fenoxycarb	ND	0.010	0.005	0.010	Pass	Teflubenzuron	ND	0.020	0.010	0.025	Pass
Fenpyroximate	ND	0.030	0.010	0.030	Pass	Tetrachlorvinphos	ND	0.010	0.005	0.010	Pass
Fensulfothion	ND	0.010	0.005	0.010	Pass	Tetramethrin	ND	0.050	0.025	0.050	Pass
Fenthion	ND	0.007	0.002	0.010	Pass	Thiabendazole	ND	0.010	0.005	0.010	Pass
Fenvalerate	ND	0.402	0.134	0.402	Pass	Thiacloprid	ND	0.010	0.005	0.010	Pass
Fipronil	ND	0.010	0.005	0.010	Pass	Thiamethoxam	ND	0.010	0.005	0.010	Pass
Fonicamid	ND	0.025	0.010	0.025	Pass	Thiophanate-Methyl	ND	0.020	0.010	0.020	Pass
Fludioxonil	ND	0.010	0.005	0.010	Pass	Trifloxystrobin	ND	0.010	0.005	0.010	Pass

Mycotoxins	LOQ	LOD	Limit	Status	Mycotoxins	LOQ	LOD	Limit	Status	
	µg/kg	µg/kg	µg/kg			µg/kg	µg/kg	µg/kg		
B1	ND	7.88	2.6	Tested	G2	ND	5.72	1.89	Tested	
B2	ND	6.18	2.04	Tested	Ochratoxin A	ND	11.72	3.87	20	Pass
G1	ND	8.99	2.97	Tested	Total Aflatoxins	ND			20	Pass

Other Analyte(s):

NR = Not Reported (no analysis was performed), ND = Not Detected (the concentration is less than the Limit of Detection (LOD)). Analytical instrumentation used: LC-MS-MS & GC-MS-MS; samples analyzed according to SOPs CO-PESTMYCO-LC-INST-004 and CO-PEST-GC-INST-004 and CO-PEST-GC-INST-003.



Infinite Chemical Analysis Labs
8312 Miramar Mall
San Diego, CA
(858) 623-2740
www.infiniteCAL.com
Lic# C8-000047-LIC

Josh M Swider

Josh Swider
Lab Director, Managing Partner
11/05/2024

Confident LIMS
All Rights Reserved
coa.support@confidentlims.com
(866) 506-5866
www.confidentlims.com



This product has been tested by Infinite Chemical Analysis Labs, LLC using validated testing methods and a quality control system as required by state law. Sample processing and testing was performed in accordance with CDPHE Colorado Wholesale Food, Industrial Hemp, and Shellfish Regulations (6 CCR 1010-21). Values reported relate only to the product tested. Infinite Chemical Analysis Labs, LLC makes no claims pertaining to the efficacy, safety, or other risks associated with any detected or non-detected levels of any compounds reported herein. This Certificate shall not be reproduced except in full without the written approval of Infinite Chemical Analysis Labs, LLC.

Certificate of Analysis Appendix

Residual Solvents - Utah Industrial Hemp

Analyte	Result (ug/g)	LOD (ug/g)	LOQ (ug/g)	Action Limit(ug/g)	Status
1,2 Dimethoxyethane	ND	5.9917	17.975	100	Pass
1,4 Dioxane	ND	12.8684	38.6052	380	Pass
1-Butanol	11.693	3.1446	9.4337	5,000	Pass
1-Pentanol	ND	9.9794	29.9383	5,000	Pass
1-Propanol	ND	6.9987	20.9962	5,000	Pass
2-Butanol	ND	9.5709	28.7127	5,000	Pass
2-Butanone	ND	7.2129	21.6386	5,000	Pass
2-Ethoxyethanol	ND	3.8723	11.6169	160	Pass
2-methylbutane	ND	0.679	2.037	5,000	Pass
2-methylpentane	ND	9.0715	27.2145	290	Pass
3-methylpentane	ND	7.3795	22.1384	290	Pass
2-Propanol (IPA)	ND	11.5286	34.5857	5,000	Pass
Acetone	ND	8.2267	24.6802	5,000	Pass
Acetonitrile	<LOQ	8.3746	25.1238	410	Pass
Benzene	ND	0.3588	1.0763	2	Pass
Butane	ND	9.552	28.6559	5,000	Pass
Cumene	ND	8.32	24.96	70	Pass
Cyclohexane	ND	8.4235	25.2705	3,880	Pass
Dichloromethane	ND	3.9511	11.8533	600	Pass
2,2-dimethylbutane	ND	0.8804	2.6412	290	Pass
2,3-dimethylbutane	ND	0.9493	2.8479	290	Pass
Dimethyl sulfoxide	ND	8.3992	25.1976	5,000	Pass
Ethanol	1231.1339	4.8156	14.4469	5,000	Pass
Ethyl acetate	ND	14.2542	42.7625	5,000	Pass
Ethyl ether	ND	6.8124	20.4372	5,000	Pass
Ethylene glycol	ND	3.4447	10.334	620	Pass
Ethylene Oxide	ND	6.5244	19.5733	50	Pass
Heptane	ND	0.4144	1.2431	5,000	Pass
Hexane	ND	0.5026	1.5078	290	Pass
Isobutane	ND	10.2495	30.7486	5,000	Pass
Isopropyl acetate	ND	4.1274	12.3823	5,000	Pass
Methanol	110.6662	18.42	55.26	3,000	Pass
N,N-dimethylacetamide	ND	268.955	806.8649	1,090	Pass
N,N-dimethylformamide	ND	2.7382	8.2147	880	Pass
Pentane	ND	0.8382	2.5146	5,000	Pass
Propane	ND	7.9467	23.8402	5,000	Pass
Pyridine	ND	19.55	58.64	100	Pass
Sulfolane	ND	22.886	68.6581	160	Pass
Tetrahydrofuran	ND	6.2156	18.6469	720	Pass
Toluene	ND	0.4061	1.2184	890	Pass
Total Xylenes	ND	10.3738	31.1216	2,170	Pass

Josh M Swider

Josh Swider
Lab Director, CEO

Pineapple Passion Fruit 5mg 2 serving/can
10/28/2024