



Certificate of Analysis

CDPHE QA SAMPLE

1 of 4

ICAL ID: 20240819-022
Sample: CA240819-008-022
Pineapple Passion Fruit
Strain: Pineapple Passion Fruit
Category: Ingestible
Type: Beverage

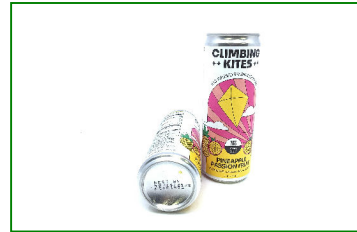
Climbing Kites, LLC
Lic. #
P.O. Box 655
Salida, CO 81201
Packaged at:
Lic. #
Niche Beverage 4131 Turrill St. Cincinnati, OH
45223

Batch#: NCKPIA02
Batch Size Collected:
Total Batch Size:
Collected: 08/22/2024; Received: 08/22/2024
Completed: 08/22/2024

Moisture NT	Δ9-THC 3.50 mg/unit	CBD 3.35 mg/unit	Total Cannabinoids 6.85 mg/unit	Sum of Cannabinoids 6.85 mg/unit	Total Terpenes NT
Water Activity NT					

Summary

Batch	SOP Used	Date Tested	Result
Cannabinoids	POT-PREP-002	08/20/2024	Pass
Residual Solvents	RS-PREP-001	08/20/2024	Complete
Microbials	MICRO-PREP-001		Complete
Mycotoxins			Pass
Heavy Metals	HM-PREP-001	08/20/2024	Pass
Pesticides	CO-PESTMICO-LC-PREP-001 / CO-PEST-GC-PREP-001	08/20/2024	Pass



Scan to see results

Cannabinoid Profile

1 Unit = can, 355.41 g. 1 mL = 1 g.

Analyte	LOQ (mg/g)	LOD (mg/g)	%	mg/g	mg/mL	mg/unit	Analyte	LOQ (mg/g)	LOD (mg/g)	%	mg/g	mg/mL	mg/unit
THCa	0.0128	0.0043	ND	ND	ND	ND	CBGa	0.0046	0.0015	ND	ND	ND	ND
Δ9-THC	0.0046	0.0010	0.001	0.01	0.01	3.50	CBG	0.0046	0.0005	ND	ND	ND	ND
Δ8-THC	0.0046	0.0014	ND	ND	ND	ND	CBN	0.0046	0.0005	ND	ND	ND	ND
THCV	0.0046	0.0006	ND	ND	ND	ND	Total THC			0.00	0.01	0.01	3.50
CBDa	0.0049	0.0016	ND	ND	ND	ND	Total CBD			0.00	0.01	0.01	3.35
CBD	0.0046	0.0008	0.001	0.01	0.01	3.35	Total			0.00	0.02	0.02	6.85
CBDV	0.0046	0.0004	ND	ND	ND	ND	Sum of Cannabinoids			0.00	0.02	0.02	6.85
CBC	0.0076	0.0025	ND	ND	ND	ND							

Total THC = THCa * 0.877 + Δ9-THC; Total CBD = CBDa * 0.877 + CBD. NR = Not Reported, ND = Not Detected. Potency is reported on a dry weight basis. Instrumentation and analysis SOPs used: Cannabinoids: UHPLC-DAD (POT-INST-005), Moisture: Moisture Analyzer (MOISTURE-001). The measurement of uncertainty for total THC concentration is ± 0.009%.

Terpene Profile

Analyte	LOQ (mg/g)	LOD (mg/g)	%	mg/g	Analyte	LOQ (mg/g)	LOD (mg/g)	%	mg/g
---------	------------	------------	---	------	---------	------------	------------	---	------

NR = Not Reported (no analysis was performed); ND = Not Detected (the concentration is less than the Limit of Detection (LOD)). Analytical instrumentation used: HS-GC-MS; samples analyzed according to SOP CO-TERP-INST-003.



Infinite Chemical Analysis Labs
8312 Miramar Mall
San Diego, CA
(858) 623-2740
www.infiniteCAL.com
Lic# C8-000047-LIC

Josh M Swider

Josh Swider
Lab Director, Managing Partner
08/22/2024

Confident LIMS
All Rights Reserved
coa.support@confidentlims.com
(866) 506-5866
www.confidentlims.com



This product has been tested by Infinite Chemical Analysis Labs, LLC using validated testing methods and a quality control system as required by state law. Sample processing and testing was performed in accordance with CDPHE Colorado Wholesale Food, Industrial Hemp, and Shellfish Regulations (6 CCR 1010-21). Values reported relate only to the product tested. Infinite Chemical Analysis Labs, LLC makes no claims pertaining to the efficacy, safety, or other risks associated with any detected or non-detected levels of any compounds reported herein. This Certificate shall not be reproduced except in full without the written approval of Infinite Chemical Analysis Labs, LLC.



Certificate of Analysis

CDPHE QA SAMPLE

2 of 4

ICAL ID: 20240819-022
Sample: CA240819-008-022
Pineapple Passion Fruit
Strain: Pineapple Passion Fruit
Category: Ingestible
Type: Beverage

Climbing Kites, LLC
Lic. #
P.O. Box 655
Salida, CO 81201
Packaged at:
Lic. #
Niche Beverage 4131 Turrill St. Cincinnati, OH
45223

Batch#: NCKPIA02
Batch Size Collected:
Total Batch Size:
Collected: 08/22/2024; Received: 08/22/2024
Completed: 08/22/2024

Residual Solvent Analysis

Category 1	LOQ	LOD	Limit	Status	Category 2	LOQ	LOD	Limit	Status
1,2-Dichloro-Ethane	µg/g	µg/g	µg/g	µg/g	Acetone	µg/g	µg/g	µg/g	µg/g
Benzene	NR 0.264	0.088	1	NT	Acetonitrile	NR 51.246	0.716	5000	NT
Chloroform	NR 0.052	0.017	1	NT	Butane	NR 4.849	0.748	5000	NT
Ethylene Oxide	NR 0.076	0.025	1	NT	Ethanol	NR 7.575	2.525	5000	NT
Methylene-Chloride	NR 0.579	0.179	1	NT	Ethyl-Acetate	NR 2.288	0.175	5000	NT
Trichloroethene	NR 0.729	0.08	1	NT	Ethyl-Ether	NR 2.869	0.389	5000	NT
	NR 0.145	0.028	1	NT	Heptane	NR 2.859	0.496	5000	NT
					n-Hexane	NR 0.281	0.027	290	NT
					Isopropanol	NR 2.86	0.614	5000	NT
					Methanol	NR 2.602	0.867	3000	NT
					Pentane	NR 5.075	1.692	5000	NT
					Propane	NR 9.709	3.236	5000	NT
					Toluene	NR 0.864	0.067	890	NT
					Xylenes	NR 2.572	0.326	2170	NT

NR = Not Reported (no analysis was performed), ND = Not Detected (the concentration is less than the Limit of Detection (LOD)). Analytical instrumentation used: HS-GC-MS; samples analyzed according to SOP CO-RS-INST-003.

Heavy Metal Screening

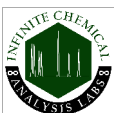
	LOQ	LOD	Limit	Status	
	µg/g	µg/g	µg/g	µg/g	
Arsenic	ND	0.009	0.003	1.5	Pass
Cadmium	ND	0.002	0.001	0.5	Pass
Lead	ND	0.004	0.001	0.5	Pass
Mercury	ND	0.014	0.005	1.5	Pass

NR = Not Reported (no analysis was performed), ND = Not Detected (the concentration is less than the Limit of Detection (LOD)). Analytical instrumentation used: ICP-MS; samples analyzed according to SOP CO-HM-INST-003.

Microbiological Screening

	Limit	Result	Status
	CFU/g	CFU/g	
Salmonella SPP		NR	NT
STEC		NR	NT
Total Coliforms	100	NR	NT
Total Aerobic Plate Count	10000	NR	NT
Total Yeast and Mold	1000	NR	NT

ND=Not Detected. Analytical instrumentation used:qPCR and microbial plating; samples analyzed according to SOPs CO-MICRO-PREP-001 and CO-MICRO-PLATE-001.



Infinite Chemical Analysis Labs
8312 Miramar Mall
San Diego, CA
(858) 623-2740
www.infiniteCAL.com
Lic# C8-0000047-LIC

Josh M Swider

Josh Swider
Lab Director, Managing Partner
08/22/2024

Confident LIMS
All Rights Reserved
coa.support@confidentlims.com
(866) 506-5866
www.confidentlims.com



This product has been tested by Infinite Chemical Analysis Labs, LLC using validated testing methods and a quality control system as required by state law. Sample processing and testing was performed in accordance with CDPHE Colorado Wholesale Food, Industrial Hemp, and Shellfish Regulations (6 CCR 1010-21). Values reported relate only to the product tested. Infinite Chemical Analysis Labs, LLC makes no claims pertaining to the efficacy, safety, or other risks associated with any detected or non-detected levels of any compounds reported herein. This Certificate shall not be reproduced except in full without the written approval of Infinite Chemical Analysis Labs, LLC.



Certificate of Analysis

CDPHE QA SAMPLE

3 of 4

ICAL ID: 20240819-022
Sample: CA240819-008-022
Pineapple Passion Fruit
Strain: Pineapple Passion Fruit
Category: Ingestible
Type: Beverage

Climbing Kites, LLC
Lic. #
P.O. Box 655
Salida, CO 81201
Packaged at:
Lic. #
Niche Beverage 4131 Turrill St. Cincinnati, OH
45223

Batch#: NCKPIA02
Batch Size Collected:
Total Batch Size:
Collected: 08/22/2024; Received: 08/22/2024
Completed: 08/22/2024

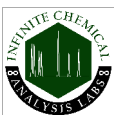
Chemical Residue Screening

Category 1	LOQ	LOD	Status	Mycotoxins	LOQ	LOD	Limit	Status
	µg/g	µg/g	µg/g		µg/kg	µg/kg	µg/kg	
Aldicarb	ND	0.030	0.010	Pass	B1	ND		Tested
Carbofuran	ND	0.010	0.005	Pass	B2	ND		Tested
Chlorfenapyr	ND	0.024	0.008	Pass	G1	ND		Tested
Chlorpyrifos	ND	0.075	0.010	Pass	G2	ND		Tested
Coumaphos	ND	0.010	0.005	Pass	Ochratoxin A	ND	20	Pass
Daminozide	ND	0.075	0.050	Pass	Total Aflatoxins	ND	20	Pass
Dichlorvos	ND	0.050	0.020	Pass				
Dimethoate	ND	0.010	0.005	Pass				
Ethoprophos	ND	0.010	0.005	Pass				
Etofenprox	ND	0.030	0.010	Pass				
Fenoxycarb	ND	0.010	0.005	Pass				
Fipronil	ND	0.010	0.005	Pass				
Imazalil	ND	0.010	0.005	Pass				
Methiocarb	ND	0.010	0.005	Pass				
Mevinphos	ND	0.025	0.010	Pass				
MGK-264	ND	0.016	0.005	Pass				
Paclbutrazol	ND	0.010	0.005	Pass				
Parathion Methyl	ND	0.026	0.009	Pass				
Propoxur	ND	0.010	0.005	Pass				
Spiroxamine	ND	0.030	0.020	Pass				
Thiacloprid	ND	0.010	0.005	Pass				

Category 2	LOQ	LOD	Limit	Status	Category 2	LOQ	LOD	Limit	Status		
	µg/g	µg/g	µg/g	µg/g		µg/g	µg/g	µg/g	µg/g		
Abamectin	ND	0.100	0.050	0.25	Pass	Kresoxim Methyl	ND	0.030	0.010	0.15	Pass
Acephate	ND	0.030	0.010	0.05	Pass	Malathion	ND	0.010	0.005	0.01	Pass
Acequinocyl	ND	0.075	0.020	0.075	Pass	Metalaxyl	ND	0.010	0.005	0.01	Pass
Acetamiprid	ND	0.030	0.010	0.05	Pass	Methomyl	ND	0.025	0.010	0.025	Pass
Azoxystrobin	ND	0.010	0.005	0.01	Pass	Myclobutanil	ND	0.010	0.005	0.01	Pass
Bifenazate	ND	0.010	0.005	0.01	Pass	Naled	ND	0.030	0.020	0.03	Pass
Bifenthrin	ND	0.030	0.005	0.03	Pass	Oxamyl	ND	0.030	0.020	1.5	Pass
Boscalid	ND	0.010	0.005	0.01	Pass	Pentachloronitrobenzene	ND	0.016	0.005	0.016	Pass
Carbaryl	ND	0.025	0.010	0.025	Pass	Permethrin	ND	0.030	0.020	0.03	Pass
Chlorantraniliprole	ND	0.030	0.010	0.03	Pass	Phosmet	ND	0.030	0.020	0.03	Pass
Clofentezine	ND	0.010	0.005	0.01	Pass	Piperonyl Butoxide	ND	0.030	0.010	1.25	Pass
Cyfluthrin	ND	0.038	0.013	0.0384	Pass	Prallethrin	ND	0.075	0.030	0.075	Pass
Cypermethrin	ND	0.053	0.018	0.0525	Pass	Propiconazole	ND	0.030	0.010	0.03	Pass
Diazinon	ND	0.030	0.010	0.03	Pass	Pyrethrins	ND	0.045	0.010	0.045	Pass
Dimethomorph	ND	0.030	0.010	0.03	Pass	Pyridaben	ND	0.020	0.010	0.02	Pass
Etoxazole	ND	0.030	0.010	0.03	Pass	Spinetoram	ND	0.010	0.005	0.01	Pass
Fenhexamid	ND	0.045	0.020	0.045	Pass	Spinosad	ND	0.010	0.005	0.01	Pass
Fenpyroximate	ND	0.030	0.010	0.03	Pass	Spiromesifen	ND	0.030	0.010	0.03	Pass
Flonicamid	ND	0.025	0.010	0.025	Pass	Spirotetramat	ND	0.010	0.005	0.01	Pass
Fludioxonil	ND	0.010	0.005	0.01	Pass	Tebuconazole	ND	0.010	0.005	0.01	Pass
Hexythiazox	ND	0.030	0.010	0.03	Pass	Thiamethoxam	ND	0.010	0.005	0.01	Pass
Imidacloprid	ND	0.010	0.005	0.01	Pass	Trifloxystrobin	ND	0.010	0.005	0.01	Pass

Other Analyte(s):

NR = Not Reported (no analysis was performed), ND = Not Detected (the concentration is less than the Limit of Detection (LOD)). Analytical instrumentation used: LC-MS-MS & GC-MS-MS; samples analyzed according to SOPs CO-PESTMYCO-LC-INST-004 and CO-PEST-GC-INST-004 and CO-PEST-GC-INST-003.



Infinite Chemical Analysis Labs
8312 Miramar Mall
San Diego, CA
(858) 623-2740
www.infiniteCAL.com
Lic# C8-000047-LIC

Josh M Swider

Josh Swider
Lab Director, Managing Partner
08/22/2024

Confident LIMS
All Rights Reserved
coa.support@confidentlims.com
(866) 506-5866
www.confidentlims.com



This product has been tested by Infinite Chemical Analysis Labs, LLC using validated testing methods and a quality control system as required by state law. Sample processing and testing was performed in accordance with CDPHE Colorado Wholesale Food, Industrial Hemp, and Shellfish Regulations (6 CCR 1010-21). Values reported relate only to the product tested. Infinite Chemical Analysis Labs, LLC makes no claims pertaining to the efficacy, safety, or other risks associated with any detected or non-detected levels of any compounds reported herein. This Certificate shall not be reproduced except in full without the written approval of Infinite Chemical Analysis Labs, LLC.



Certificate of Analysis

CDPHE QA SAMPLE

4 of 4

ICAL ID: 20240819-022
Sample: CA240819-008-022
Pineapple Passion Fruit
Strain: Pineapple Passion Fruit
Category: Ingestible
Type: Beverage

Climbing Kites, LLC
Lic. #
P.O. Box 655
Salida, CO 81201
Packaged at:
Lic. #
Niche Beverage 4131 Turrill St. Cincinnati, OH
45223

Batch#: NCKPIA02
Batch Size Collected:
Total Batch Size:
Collected: 08/22/2024; Received: 08/22/2024
Completed: 08/22/2024

Chemical Residue Screening

Analytes	LOQ	LOD	Limit	Status	Analytes	LOQ	LOD	Limit	Status		
	µg/g	µg/g	µg/g			µg/g	µg/g	µg/g			
Abamectin	ND	0.100	0.050	0.250	Pass	Fludioxonil	ND	0.010	0.005	0.010	Pass
Acephate	ND	0.030	0.010	0.050	Pass	Hexythiazox	ND	0.030	0.010	0.030	Pass
Acequinocyl	ND	0.075	0.020	0.075	Pass	Imazalil	ND	0.010	0.005	0.010	Pass
Acetamiprid	ND	0.030	0.010	0.050	Pass	Imidacloprid	ND	0.010	0.005	0.010	Pass
Aldicarb	ND	0.030	0.010	0.500	Pass	Iprodione	ND	0.475	0.158	0.500	Pass
Azoxystrobin	ND	0.010	0.005	0.010	Pass	Kinoprene	ND	0.221	0.074	1.250	Pass
Bifenazate	ND	0.010	0.005	0.010	Pass	Kresoxim Methyl	ND	0.030	0.010	0.150	Pass
Bifenthrin	ND	0.030	0.005	0.030	Pass	Malathion	ND	0.010	0.005	0.010	Pass
Boscalid	ND	0.010	0.005	0.010	Pass	Metaxyl	ND	0.010	0.005	0.010	Pass
Captan	ND	0.358	0.120	5.000	Pass	Methiocarb	ND	0.010	0.005	0.010	Pass
Carbaryl	ND	0.025	0.010	0.025	Pass	Methomyl	ND	0.025	0.010	0.025	Pass
Carbofuran	ND	0.010	0.005	0.010	Pass	Mevinphos	ND	0.025	0.010	0.025	Pass
Chlorantraniliprole	ND	0.030	0.010	0.030	Pass	MGK-264	ND	0.016	0.005	0.050	Pass
Chlordane	ND	0.075	0.025	0.025	Pass	Myclobutanil	ND	0.010	0.005	0.010	Pass
Chlorfenapyr	ND	0.024	0.008	1.500	Pass	Naled	ND	0.030	0.020	0.030	Pass
Chlorpyrifos	ND	0.075	0.010	0.500	Pass	Oxamyl	ND	0.030	0.020	1.500	Pass
Clofentezine	ND	0.010	0.005	0.010	Pass	Pacllobutrazol	ND	0.010	0.005	0.010	Pass
Coumaphos	ND	0.010	0.005	0.010	Pass	Parathion Methyl	ND	0.026	0.009	0.026	Pass
Cyfluthrin	ND	0.038	0.013	0.038	Pass	Pentachloronitrobenzene	ND	0.016	0.005	0.016	Pass
Cypermethrin	ND	0.053	0.018	0.053	Pass	Permethrin	ND	0.030	0.020	0.030	Pass
Daminozide	ND	0.075	0.050	0.075	Pass	Phosmet	ND	0.030	0.020	0.030	Pass
Diazinon	ND	0.030	0.010	0.030	Pass	Piperonyl Butoxide	ND	0.030	0.010	1.250	Pass
Dichlorvos	ND	0.050	0.020	0.050	Pass	Prallethrin	ND	0.075	0.030	0.075	Pass
Dimethoate	ND	0.010	0.005	0.010	Pass	Propiconazole	ND	0.030	0.010	0.030	Pass
Dimethomorph	ND	0.030	0.010	0.030	Pass	Propoxur	ND	0.010	0.005	0.010	Pass
Endosulfan I	ND	0.353	0.118	2.500	Pass	Pyrethrins	ND	0.045	0.010	0.045	Pass
Endosulfan II	ND	0.239	0.080	2.500	Pass	Pyridaben	ND	0.020	0.010	0.020	Pass
Endosulfan Sulfate	ND	0.026	0.009	2.500	Pass	Spinetoram	ND	0.010	0.005	0.010	Pass
Ethoprophos	ND	0.010	0.005	0.010	Pass	Spinosad	ND	0.010	0.005	0.010	Pass
Etofenprox	ND	0.030	0.010	0.030	Pass	Spiromesifen	ND	0.030	0.010	0.030	Pass
Etoxazole	ND	0.030	0.010	0.030	Pass	Spirotetramat	ND	0.010	0.005	0.010	Pass
Etridiazole	ND	0.044	0.015	0.150	Pass	Spiroxamine	ND	0.030	0.020	0.030	Pass
Fenhexamid	ND	0.045	0.020	0.045	Pass	Tebuconazole	ND	0.010	0.005	0.010	Pass
Fenoxycarb	ND	0.010	0.005	0.010	Pass	Thiacloprid	ND	0.010	0.005	0.010	Pass
Fenpyroximate	ND	0.030	0.010	0.030	Pass	Thiamethoxam	ND	0.010	0.005	0.010	Pass
Fipronil	ND	0.010	0.005	0.010	Pass	Trifloxystrobin	ND	0.010	0.005	0.010	Pass
Flonicamid	ND	0.025	0.010	0.025	Pass						

Mycotoxins	LOQ	LOD	Limit	Status	Mycotoxins	LOQ	LOD	Limit	Status
	µg/kg	µg/kg	µg/kg			µg/kg	µg/kg	µg/kg	
B1	ND			Tested	G2	ND			Tested
B2	ND			Tested	Ochratoxin A	ND		20	Pass
G1	ND			Tested	Total Aflatoxins	ND		20	Pass

Other Analyte(s):

NR = Not Reported (no analysis was performed), ND = Not Detected (the concentration is less than the Limit of Detection (LOD)). Analytical instrumentation used: LC-MS-MS & GC-MS-MS; samples analyzed according to SOPs CO-PESTMYCO-LC-INST-004 and CO-PEST-GC-INST-004 and CO-PEST-GC-INST-003.



Infinite Chemical Analysis Labs
8312 Miramar Mall
San Diego, CA
(858) 623-2740
www.infiniteCAL.com
Lic# C8-000047-LIC

Josh M Swider

Josh Swider
Lab Director, Managing Partner
08/22/2024

Confident LIMS
All Rights Reserved
coa.support@confidentlims.com
(866) 506-5866
www.confidentlims.com



This product has been tested by Infinite Chemical Analysis Labs, LLC using validated testing methods and a quality control system as required by state law. Sample processing and testing was performed in accordance with CDPHE Colorado Wholesale Food, Industrial Hemp, and Shellfish Regulations (6 CCR 1010-21). Values reported relate only to the product tested. Infinite Chemical Analysis Labs, LLC makes no claims pertaining to the efficacy, safety, or other risks associated with any detected or non-detected levels of any compounds reported herein. This Certificate shall not be reproduced except in full without the written approval of Infinite Chemical Analysis Labs, LLC.