



Certificate of Analysis

CDPHE QA SAMPLE

1 of 5

ICAL ID: 20240812-053
Sample: CA240812-009-014
Iced Tea Lemonade
Strain: Iced Tea Lemonade
Category: Ingestible
Type: Beverage

Climbing Kites, LLC
Lic. #
P.O. Box 655
Salida, CO 81201
Packaged at:
Lic. #
Niche Beverage 4131 Turrill St. Cincinnati, OH
45223"

Batch#: NCKITLIA01
Batch Size Collected:
Total Batch Size:
Collected: 08/15/2024; Received: 08/15/2024
Completed: 08/15/2024

Moisture NT	Δ9-THC 3.27 mg/unit	CBD 2.80 mg/unit	Total Cannabinoids 6.08 mg/unit	Sum of Cannabinoids 6.08 mg/unit	Total Terpenes NT
Water Activity NT					

Summary	SOP Used	Date Tested	
Batch			Pass
Cannabinoids	POT-PREP-002	08/13/2024	Complete
Residual Solvents	RS-PREP-001		Complete
Microbials	MICRO-PREP-001	08/15/2024	Pass
Mycotoxins	PESTMICO-LC-PREP-001	08/15/2024	Pass
Heavy Metals	HM-PREP-001	08/13/2024	Pass
Foreign Matter	FM-PREP-001	08/13/2024	Pass
Pesticides	PESTMICO-LC-PREP-001 / PEST-GC-PREP-001		Pass



Scan to see results

Cannabinoid Profile

1 Unit = can, 358.76 g. 1 mL = 1 g.

Analyte	LOQ (mg/g)	LOD (mg/g)	%	mg/g	mg/mL	mg/unit	Analyte	LOQ (mg/g)	LOD (mg/g)	%	mg/g	mg/mL	mg/unit
THCa	0.0128	0.0043	ND	ND	ND	ND	CBGa	0.0046	0.0015	ND	ND	ND	ND
Δ9-THC	0.0046	0.0010	0.001	0.01	0.01	3.27	CBG	0.0046	0.0005	ND	ND	ND	ND
Δ8-THC	0.0046	0.0014	ND	ND	ND	ND	CBN	0.0046	0.0005	ND	ND	ND	ND
THCV	0.0046	0.0006	ND	ND	ND	ND	Total THC			0.00	0.01	0.01	3.27
CBDa	0.0049	0.0016	ND	ND	ND	ND	Total CBD			0.00	0.01	0.01	2.80
CBD	0.0046	0.0008	0.001	0.01	0.01	2.80	Total			0.00	0.02	0.02	6.08
CBDV	0.0046	0.0004	ND	ND	ND	ND	Sum of			0.00	0.02	0.02	6.08
CBC	0.0076	0.0025	ND	ND	ND	ND	Cannabinoids			0.00	0.02	0.02	6.08

Total THC = THCa * 0.877 + Δ9-THC; Total CBD = CBDa * 0.877 + CBD. NR = Not Reported, ND = Not Detected. Potency is reported on a dry weight basis. Instrumentation and analysis SOPs used: Cannabinoids: UHPLC-DAD (POT-INST-005), Moisture: Moisture Analyzer (MOISTURE-001). The measurement of uncertainty for total THC concentration is ± 0.009%.

Terpene Profile

Analyte	LOQ (mg/g)	LOD (mg/g)	%	mg/g	Analyte	LOQ (mg/g)	LOD (mg/g)	%	mg/g
---------	------------	------------	---	------	---------	------------	------------	---	------

NR = Not Reported (no analysis was performed); ND = Not Detected (the concentration is less than the Limit of Detection (LOD)). Analytical instrumentation used: HS-GC-MS; samples analyzed according to SOP CO-TERP-INST-003.



Infinite Chemical Analysis Labs
8312 Miramar Mall
San Diego, CA
(858) 623-2740
www.infiniteCAL.com
Lic# C8-0000047-LIC

Josh M Swider

Josh Swider
Lab Director, Managing Partner
08/15/2024

Confident LIMS
All Rights Reserved
coa.support@confidentlims.com
(866) 506-5866
www.confidentlims.com



This product has been tested by Infinite Chemical Analysis Labs, LLC using validated testing methods and a quality control system as required by state law. Sample processing and testing was performed in accordance with CDPHE Colorado Wholesale Food, Industrial Hemp, and Shellfish Regulations (6 CCR 1010-21). Values reported relate only to the product tested. Infinite Chemical Analysis Labs, LLC makes no claims pertaining to the efficacy, safety, or other risks associated with any detected or non-detected levels of any compounds reported herein. This Certificate shall not be reproduced except in full without the written approval of Infinite Chemical Analysis Labs, LLC.



Certificate of Analysis

CDPHE QA SAMPLE

2 of 5

ICAL ID: 20240812-053
Sample: CA240812-009-014
Iced Tea Lemonade
Strain: Iced Tea Lemonade
Category: Ingestible
Type: Beverage

Climbing Kites, LLC
Lic. #
P.O. Box 655
Salida, CO 81201
Packaged at:
Lic. #
Niche Beverage 4131 Turrill St. Cincinnati, OH
45223"

Batch#: NCKITLIA01
Batch Size Collected:
Total Batch Size:
Collected: 08/15/2024; Received: 08/15/2024
Completed: 08/15/2024

Residual Solvent Analysis

Category 1	LOQ	LOD	Limit	Status	Category 2	LOQ	LOD	Limit	Status	Category 2	LOQ	LOD	Limit	Status			
	µg/g	µg/g	µg/g	µg/g		µg/g	µg/g	µg/g	µg/g		µg/g	µg/g	µg/g	µg/g			
1,2-Dichloro-Ethane	NR	0.264	0.088	1	NT	Acetone	NR	51.246	0.716	5000	NT	n-Hexane	NR	0.281	0.027	290	NT
Benzene	NR	0.052	0.017	1	NT	Acetonitrile	NR	0.42	0.14	410	NT	Isopropanol	NR	2.86	0.614	5000	NT
Chloroform	NR	0.076	0.025	1	NT	Butane	NR	4.849	0.748	5000	NT	Methanol	NR	2.602	0.867	3000	NT
Ethylene Oxide	NR	0.579	0.179	1	NT	Ethanol	NR	7.575	2.525	5000	NT	Pentane	NR	5.075	1.692	5000	NT
Methylene-Chloride	NR	0.729	0.08	1	NT	Ethyl-Acetate	NR	2.288	0.175	5000	NT	Propane	NR	9.709	3.236	5000	NT
Trichloroethene	NR	0.145	0.028	1	NT	Ethyl-Ether	NR	2.869	0.389	5000	NT	Toluene	NR	0.864	0.067	890	NT
						Heptane	NR	2.859	0.496	5000	NT	Xylenes	NR	2.572	0.326	2170	NT

NR = Not Reported (no analysis was performed), ND = Not Detected (the concentration is less than the Limit of Detection (LOD)). Analytical instrumentation used: HS-GC-MS; samples analyzed according to SOP CO-RS-INST-003.

Heavy Metal Screening

	LOQ	LOD	Limit	Status	
µg/g	µg/g	µg/g	µg/g		
Arsenic	ND	0.009	0.003	1.5	Pass
Cadmium	ND	0.002	0.001	0.5	Pass
Lead	ND	0.004	0.001	0.5	Pass
Mercury	ND	0.014	0.005	1.5	Pass

NR = Not Reported (no analysis was performed), ND = Not Detected (the concentration is less than the Limit of Detection (LOD)). Analytical instrumentation used: ICP-MS; samples analyzed according to SOP CO-HM-INST-003.

Microbiological Screening

	Limit	Result	Status
	CFU/g	CFU/g	
Salmonella SPP		Not Detected	Pass
STEC		Not Detected	Pass
Total Coliforms	100	NR	NT
Total Aerobic Plate Count	10000	NR	NT
Total Yeast and Mold	1000	NR	NT

ND=Not Detected. Analytical instrumentation used:qPCR and microbial plating; samples analyzed according to SOPs CO-MICRO-PREP-001 and CO-MICRO-PLATE-001.



Infinite Chemical Analysis Labs
8312 Miramar Mall
San Diego, CA
(858) 623-2740
www.infiniteCAL.com
Lic# C8-0000047-LIC

Josh M Swider

Josh Swider
Lab Director, Managing Partner
08/15/2024

Confident LIMS
All Rights Reserved
coa.support@confidentlims.com
(866) 506-5866
www.confidentlims.com



This product has been tested by Infinite Chemical Analysis Labs, LLC using validated testing methods and a quality control system as required by state law. Sample processing and testing was performed in accordance with CDPHE Colorado Wholesale Food, Industrial Hemp, and Shellfish Regulations (6 CCR 1010-21). Values reported relate only to the product tested. Infinite Chemical Analysis Labs, LLC makes no claims pertaining to the efficacy, safety, or other risks associated with any detected or non-detected levels of any compounds reported herein. This Certificate shall not be reproduced except in full without the written approval of Infinite Chemical Analysis Labs, LLC.



Certificate of Analysis

CDPHE QA SAMPLE

3 of 5

ICAL ID: 20240812-053
Sample: CA240812-009-014
Iced Tea Lemonade
Strain: Iced Tea Lemonade
Category: Ingestible
Type: Beverage

Climbing Kites, LLC
Lic. #
P.O. Box 655
Salida, CO 81201
Packaged at:
Lic. #
Niche Beverage 4131 Turrill St. Cincinnati, OH
45223"

Batch#: NCKITLIA01
Batch Size Collected:
Total Batch Size:
Collected: 08/15/2024; Received: 08/15/2024
Completed: 08/15/2024

Residual Solvent Analysis

Category 1	LOQ	LOD	Limit	Status	Category 2	LOQ	LOD	Limit	Status	Category 2	LOQ	LOD	Limit	Status			
	µg/g	µg/g	µg/g	µg/g		µg/g	µg/g	µg/g	µg/g		µg/g	µg/g	µg/g	µg/g			
1,2-Dichloro-Ethane	NR	0.264	0.088	1	NT	Acetone	NR	51.246	0.716	5000	NT	n-Hexane	NR	0.281	0.027	290	NT
Benzene	NR	0.052	0.017	1	NT	Acetonitrile	NR	0.42	0.14	410	NT	Isopropanol	NR	2.86	0.614	5000	NT
Chloroform	NR	0.076	0.025	1	NT	Butane	NR	4.849	0.748	5000	NT	Methanol	NR	2.602	0.867	3000	NT
Ethylene Oxide	NR	0.579	0.179	1	NT	Ethanol	NR	7.575	2.525	5000	NT	Pentane	NR	5.075	1.692	5000	NT
Methylene-Chloride	NR	0.729	0.08	1	NT	Ethyl-Acetate	NR	2.288	0.175	5000	NT	Propane	NR	9.709	3.236	5000	NT
Trichloroethene	NR	0.145	0.028	1	NT	Ethyl-Ether	NR	2.869	0.389	5000	NT	Toluene	NR	0.864	0.067	890	NT
						Heptane	NR	2.859	0.496	5000	NT	Xylenes	NR	2.572	0.326	2170	NT

NR = Not Reported (no analysis was performed), ND = Not Detected (the concentration is less than the Limit of Detection (LOD)). Analytical instrumentation used: HS-GC-MS; samples analyzed according to SOP CO-RS-INST-003.

Heavy Metal Screening

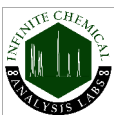
	LOQ	LOD	Limit	Status	
	µg/g	µg/g	µg/g	µg/g	
Arsenic	ND	0.009	0.003	1.5	Pass
Cadmium	ND	0.002	0.001	0.5	Pass
Lead	ND	0.004	0.001	0.5	Pass
Mercury	ND	0.014	0.005	1.5	Pass

NR = Not Reported (no analysis was performed), ND = Not Detected (the concentration is less than the Limit of Detection (LOD)). Analytical instrumentation used: ICP-MS; samples analyzed according to SOP CO-HM-INST-003.

Microbiological Screening

	Limit	Result	Status
	CFU/g	CFU/g	
Listeria		NR	NT
Aspergillus niger	0	ND	Pass
Total Coliforms	100	NR	NT
Rapid Yeast and Mold	1000	NR	NT
Aspergillus flavus	0	ND	Pass
Total E. Coli		Not Detected	Pass
Enterobacteriaceae		NR	NT
Staphylococcus aureus	0	NR	NT
Pseudomonas aeruginosa	0	NR	NT
Total Aerobic Plate Count	10000	NR	NT
Aspergillus fumigatus	0	ND	Pass
Aspergillus terreus	0	ND	Pass
Salmonella		Not Detected	Pass

ND=Not Detected. Analytical instrumentation used:qPCR and microbial plating; samples analyzed according to SOPs CO-MICRO-PREP-001 and CO-MICRO-PLATE-001.



Infinite Chemical Analysis Labs
8312 Miramar Mall
San Diego, CA
(858) 623-2740
www.infiniteCAL.com
Lic# C8-000047-LIC

Josh M Swider

Josh Swider
Lab Director, Managing Partner
08/15/2024

Confident LIMS
All Rights Reserved
coa.support@confidentlims.com
(866) 506-5866
www.confidentlims.com



This product has been tested by Infinite Chemical Analysis Labs, LLC using validated testing methods and a quality control system as required by state law. Sample processing and testing was performed in accordance with CDPHE Colorado Wholesale Food, Industrial Hemp, and Shellfish Regulations (6 CCR 1010-21). Values reported relate only to the product tested. Infinite Chemical Analysis Labs, LLC makes no claims pertaining to the efficacy, safety, or other risks associated with any detected or non-detected levels of any compounds reported herein. This Certificate shall not be reproduced except in full without the written approval of Infinite Chemical Analysis Labs, LLC.



Certificate of Analysis

CDPHE QA SAMPLE

4 of 5

ICAL ID: 20240812-053
Sample: CA240812-009-014
Iced Tea Lemonade
Strain: Iced Tea Lemonade
Category: Ingestible
Type: Beverage

Climbing Kites, LLC
Lic. #
P.O. Box 655
Salida, CO 81201
Packaged at:
Lic. #
Niche Beverage 4131 Turrill St. Cincinnati, OH
45223"

Batch#: NCKITLIA01
Batch Size Collected:
Total Batch Size:
Collected: 08/15/2024; Received: 08/15/2024
Completed: 08/15/2024

Chemical Residue Screening

Category 1	LOQ	LOD	Status	Mycotoxins	LOQ	LOD	Limit	Status		
	µg/g	µg/g	µg/g		µg/kg	µg/kg	µg/kg			
Aldicarb	ND	0.065	0.022	Pass	B1	ND	7.88	2.6	Tested	
Carbofuran	ND	0.030	0.009	Pass	B2	ND	6.18	2.04	Tested	
Chlorfenapyr	NR	0.075	0.025	NT	G1	ND	8.99	2.97	Tested	
Chlorpyrifos	ND	0.053	0.018	Pass	G2	ND	5.72	1.89	Tested	
Coumaphos	ND	0.056	0.018	Pass	Ochratoxin A	ND	11.72	3.87	20	Pass
Daminozide	ND	0.079	0.026	Pass	Total Aflatoxins	ND		20	Pass	
Dichlorvos	ND	0.067	0.022	Pass						
Dimethoate	ND	0.036	0.012	Pass						
Ethoprophos	ND	0.053	0.017	Pass						
Etofenprox	ND	0.030	0.008	Pass						
Fenoxycarb	ND	0.043	0.014	Pass						
Fipronil	ND	0.045	0.015	Pass						
Imazalil	ND	0.047	0.016	Pass						
Methiocarb	ND	0.047	0.016	Pass						
Mevinphos	ND	0.042	0.014	Pass						
MGK-264	NR			NT						
Pacllobutrazol	ND	0.040	0.013	Pass						
Parathion Methyl	NR	0.024	0.008	NT						
Propoxur	ND	0.047	0.016	Pass						
Spiroxamine	ND	0.032	0.011	Pass						
Thiacloprid	ND	0.042	0.014	Pass						

Category 2	LOQ	LOD	Limit	Status	Category 2	LOQ	LOD	Limit	Status		
	µg/g	µg/g	µg/g	µg/g		µg/g	µg/g	µg/g	µg/g		
Abamectin	ND	0.030	0.010	0.3	Pass	Kresoxim Methyl	ND	0.038	0.012	1	Pass
Acephate	ND	0.050	0.016	5	Pass	Malathion	ND	0.035	0.012	5	Pass
Acequinocyl	ND	0.059	0.019	4	Pass	Metalaxyl	ND	0.031	0.010	15	Pass
Acetamiprid	ND	0.044	0.015	5	Pass	Methomyl	ND	0.048	0.016	0.1	Pass
Azoxystrobin	ND	0.029	0.010	40	Pass	Myclobutanil	ND	0.055	0.018	9	Pass
Bifenazate	ND	0.035	0.012	5	Pass	Naled	NR	0.051	0.017	0.5	NT
Bifenthrin	ND	0.040	0.013	0.5	Pass	Oxamyl	ND	0.046	0.015	0.3	Pass
Boscalid	ND	0.060	0.020	10	Pass	Pentachloronitrobenzene	NR	0.054	0.018	0.2	NT
Carbaryl	ND	0.049	0.016	0.5	Pass	Permethrin	ND	0.030	0.008	20	Pass
Chlorantraniliprole	ND	0.063	0.021	40	Pass	Phosmet	ND	0.038	0.012	0.2	Pass
Clofentezine	ND	0.039	0.013	0.5	Pass	Piperonyl Butoxide	ND	0.030	0.008	8	Pass
Cyfluthrin	NR	0.056	0.019	1	NT	Prallethrin	ND	0.068	0.023	0.4	Pass
Cypermethrin	NR	0.044	0.015	1	NT	Propiconazole	ND	0.059	0.019	20	Pass
Diazinon	ND	0.030	0.006	0.2	Pass	Pyrethrins	ND	0.030	0.004	1	Pass
Dimethomorph	ND	0.042	0.014	20	Pass	Pyridaben	ND	0.035	0.012	3	Pass
Etoxazole	ND	0.030	0.008	1.5	Pass	Spinetoram	ND	0.030	0.006	3	Pass
Fenhexamid	ND	0.039	0.013	10	Pass	Spinosad	ND	0.030	0.004	3	Pass
Fenpyroximate	ND	0.030	0.010	2	Pass	Spiromesifen	ND	0.042	0.014	12	Pass
Flonicamid	ND	0.081	0.027	2	Pass	Spirotetramat	ND	0.041	0.013	13	Pass
Fludioxonil	ND	0.046	0.015	30	Pass	Tebuconazole	ND	0.044	0.014	2	Pass
Hexythiazox	ND	0.078	0.026	2	Pass	Thiamethoxam	ND	0.055	0.018	4.5	Pass
Imidacloprid	ND	0.071	0.023	3	Pass	Trifloxystrobin	ND	0.031	0.010	30	Pass

Other Analyte(s): Caffeine: 0.0117%; 41.82mg/can

NR = Not Reported (no analysis was performed), ND = Not Detected (the concentration is less than the Limit of Detection (LOD)). Analytical instrumentation used: LC-MS-MS & GC-MS-MS; samples analyzed according to SOPs CO-PESTMYCO-LC-INST-004 and CO-PEST-GC-INST-004 and CO-PEST-GC-INST-003.



Infinite Chemical Analysis Labs
8312 Miramar Mall
San Diego, CA
(858) 623-2740
www.infiniteCAL.com
Lic# C8-0000047-LIC

Josh M Swider

Josh Swider
Lab Director, Managing Partner
08/15/2024

Confident LIMS
All Rights Reserved
coa.support@confidentlims.com
(866) 506-5866
www.confidentlims.com



This product has been tested by Infinite Chemical Analysis Labs, LLC using validated testing methods and a quality control system as required by state law. Sample processing and testing was performed in accordance with CDPHE Colorado Wholesale Food, Industrial Hemp, and Shellfish Regulations (6 CCR 1010-21). Values reported relate only to the product tested. Infinite Chemical Analysis Labs, LLC makes no claims pertaining to the efficacy, safety, or other risks associated with any detected or non-detected levels of any compounds reported herein. This Certificate shall not be reproduced except in full without the written approval of Infinite Chemical Analysis Labs, LLC.



Certificate of Analysis

CDPHE QA SAMPLE

5 of 5

ICAL ID: 20240812-053
Sample: CA240812-009-014
Iced Tea Lemonade
Strain: Iced Tea Lemonade
Category: Ingestible
Type: Beverage

Climbing Kites, LLC
Lic. #
P.O. Box 655
Salida, CO 81201
Packaged at:
Lic. #
Niche Beverage 4131 Turrill St. Cincinnati, OH
45223"

Batch#: NCKITLIA01
Batch Size Collected:
Total Batch Size:
Collected: 08/15/2024; Received: 08/15/2024
Completed: 08/15/2024

Chemical Residue Screening

Analytes	LOQ				Limit	Status	Analytes	LOQ				Limit	Status
	µg/g	µg/g	µg/g	µg/g				µg/g	µg/g	µg/g	µg/g		
Abamectin	ND	0.030	0.010	0.300	0.300	Pass	Hexythiazox	ND	0.078	0.026	2.000	Pass	
Acephate	ND	0.050	0.016	5.000	5.000	Pass	Imazalil	ND	0.047	0.016	0.016	Pass	
Acequinocyl	ND	0.059	0.019	4.000	4.000	Pass	Imidacloprid	ND	0.071	0.023	3.000	Pass	
Acetamiprid	ND	0.044	0.015	5.000	5.000	Pass	Kresoxim Methyl	ND	0.038	0.012	1.000	Pass	
Aldicarb	ND	0.065	0.022	0.022	0.022	Pass	Lambda-Cyhalothrin	ND				Tested	
Allethrin	ND					Tested	Malathion	ND	0.035	0.012	5.000	Pass	
Atrazine	ND					Tested	Metalaxyl	ND	0.031	0.010	15.000	Pass	
Azadirachtin	ND					Tested	Methiocarb	ND	0.047	0.016	0.016	Pass	
Azoxystrobin	ND	0.029	0.010	40.000	40.000	Pass	Methomyl	ND	0.048	0.016	0.100	Pass	
Benzovindiflupyr	ND					Tested	Methoprene	ND				Tested	
Bifenazate	ND	0.035	0.012	5.000	5.000	Pass	Mevinphos	ND	0.042	0.014	0.014	Pass	
Bifenthrin	ND	0.040	0.013	0.500	0.500	Pass	Myclobutanil	ND	0.055	0.018	9.000	Pass	
Boscalid	ND	0.060	0.020	10.000	10.000	Pass	Novaluron	ND				Tested	
Buprofezin	ND					Tested	Oxamyl	ND	0.046	0.015	0.300	Pass	
Carbaryl	ND	0.049	0.016	0.500	0.500	Pass	Pacloubtrazol	ND	0.040	0.013	0.013	Pass	
Carbofuran	ND	0.030	0.009	0.009	0.009	Pass	Permethrin	ND	0.030	0.008	20.000	Pass	
Chlorantranilprole	ND	0.063	0.021	40.000	40.000	Pass	Phenothrin	ND				Tested	
Chlorpyrifos	ND	0.053	0.018	0.018	0.018	Pass	Phosmet	ND	0.038	0.012	0.200	Pass	
Clofentezine	ND	0.039	0.013	0.500	0.500	Pass	Piperonyl Butoxide	ND	0.030	0.008	8.000	Pass	
Clothianidin	ND					Tested	Pirimicarb	ND				Tested	
Coumaphos	ND	0.056	0.018	0.018	0.018	Pass	Prallethrin	ND	0.068	0.023	0.400	Pass	
Cyantranilprole	ND					Tested	Propiconazole	ND	0.059	0.019	20.000	Pass	
Cyprodinil	ND					Tested	Propoxur	ND	0.047	0.016	0.016	Pass	
Daminozide	ND	0.079	0.026	0.026	0.026	Pass	Pyraclostrobin	ND				Tested	
Deltamethrin	ND					Tested	Pyrethrins	ND	0.030	0.004	1.000	Pass	
Diazinon	ND	0.030	0.006	0.200	0.200	Pass	Pyridaben	ND	0.035	0.012	3.000	Pass	
Dichlorvos	ND	0.067	0.022	0.022	0.022	Pass	Pyriproxifen	ND				Tested	
Dimethoate	ND	0.036	0.012	0.012	0.012	Pass	Resmethrin	ND				Tested	
Dimethomorph	ND	0.042	0.014	20.000	20.000	Pass	Spinetoram	ND	0.030	0.006	3.000	Pass	
Dinotefuran	ND					Tested	Spinosad	ND	0.030	0.004	3.000	Pass	
Diuron	ND					Tested	Spirodiclofen	ND				Tested	
Dodemorph	ND					Tested	Spiromesifen	ND	0.042	0.014	12.000	Pass	
Ethoprophos	ND	0.053	0.017	0.017	0.017	Pass	Spirotetramat	ND	0.041	0.013	13.000	Pass	
Etofenprox	ND	0.030	0.008	0.008	0.008	Pass	Spiroxamine	ND	0.032	0.011	0.011	Pass	
Etoxazole	ND	0.030	0.008	1.500	1.500	Pass	Tebuconazole	ND	0.044	0.014	2.000	Pass	
Fenhexamid	ND	0.039	0.013	10.000	10.000	Pass	Tebufenozide	ND				Tested	
Fenoxycarb	ND	0.043	0.014	0.014	0.014	Pass	Teflubenzuron	ND				Tested	
Fenpyroximate	ND	0.030	0.010	2.000	2.000	Pass	Tetrachlorvinphos	ND				Tested	
Fensulfothion	ND					Tested	Tetramethrin	ND				Tested	
Fenthion	ND					Tested	Thiabendazole	ND				Tested	
Fenvalerate	ND					Tested	Thiacloprid	ND	0.042	0.014	0.014	Pass	
Fipronil	ND	0.045	0.015	0.015	0.015	Pass	Thiamethoxam	ND	0.055	0.018	4.500	Pass	
Fonicamid	ND	0.081	0.027	2.000	2.000	Pass	Thiophanate-Methyl	ND				Tested	
Fludioxonil	ND	0.046	0.015	30.000	30.000	Pass	Trifloxystrobin	ND	0.031	0.010	30.000	Pass	
Fluopyram	ND					Tested							

Mycotoxins	LOQ				Limit	Status	Mycotoxins	LOQ				Limit	Status
	µg/kg	µg/kg	µg/kg	µg/kg				µg/kg	µg/kg	µg/kg	µg/kg		
B1	ND	7.88	2.6			Tested	G2	ND	5.72	1.89		Tested	
B2	ND	6.18	2.04			Tested	Ochratoxin A	ND	11.72	3.87	20	Pass	
G1	ND	8.99	2.97			Tested	Total Aflatoxins	ND			20	Pass	

Other Analyte(s): Caffeine: 0.0117%; 41.82mg/can

NR = Not Reported (no analysis was performed), ND = Not Detected (the concentration is less than the Limit of Detection (LOD)). Analytical instrumentation used: LC-MS-MS & GC-MS-MS; samples analyzed according to SOPs CO-PESTMYCO-LC-INST-004 and CO-PEST-GC-INST-004 and CO-PEST-GC-INST-003.



Infinite Chemical Analysis Labs
8312 Miramar Mall
San Diego, CA
(858) 623-2740
www.infiniteCAL.com
Lic# C8-000047-LIC

Josh M Swider

Josh Swider
Lab Director, Managing Partner
08/15/2024

Confident LIMS
All Rights Reserved
coa.support@confidentlims.com
(866) 506-5866
www.confidentlims.com



This product has been tested by Infinite Chemical Analysis Labs, LLC using validated testing methods and a quality control system as required by state law. Sample processing and testing was performed in accordance with CDPHE Colorado Wholesale Food, Industrial Hemp, and Shellfish Regulations (6 CCR 1010-21). Values reported relate only to the product tested. Infinite Chemical Analysis Labs, LLC makes no claims pertaining to the efficacy, safety, or other risks associated with any detected or non-detected levels of any compounds reported herein. This Certificate shall not be reproduced except in full without the written approval of Infinite Chemical Analysis Labs, LLC.

Certificate of Analysis Appendix

Residual Solvents - Utah Industrial Hemp

Analyte	Result (ug/g)	LOD (ug/g)	LOQ (ug/g)	Action Limit(ug/g)	Status
1,2 Dimethoxyethane	ND	5.9917	17.975	100	Pass
1,4 Dioxane	ND	12.8684	38.6052	380	Pass
1-Butanol	ND	3.1446	9.4337	5,000	Pass
1-Pentanol	ND	9.9794	29.9383	5,000	Pass
1-Propanol	ND	6.9987	20.9962	5,000	Pass
2-Butanol	ND	9.5709	28.7127	5,000	Pass
2-Butanone	ND	7.2129	21.6386	5,000	Pass
2-Ethoxyethanol	ND	3.8723	11.6169	160	Pass
2-methylbutane	ND	0.679	2.037	5,000	Pass
2-methylpentane	ND	9.0715	27.2145	290	Pass
3-methylpentane	ND	7.3795	22.1384	290	Pass
2-Propanol (IPA)	ND	11.5286	34.5857	5,000	Pass
Acetone	ND	8.2267	24.6802	5,000	Pass
Acetonitrile	ND	8.3746	25.1238	410	Pass
Benzene	ND	0.3588	1.0763	2	Pass
Butane	ND	9.552	28.6559	5,000	Pass
Cumene	ND	8.32	24.96	70	Pass
Cyclohexane	ND	8.4235	25.2705	3,880	Pass
Dichloromethane	ND	3.9511	11.8533	600	Pass
2,2-dimethylbutane	ND	0.8804	2.6412	290	Pass
2,3-dimethylbutane	ND	0.9493	2.8479	290	Pass
Dimethyl sulfoxide	ND	8.3992	25.1976	5,000	Pass
Ethanol	602.2101	4.8156	14.4469	5,000	Pass
Ethyl acetate	ND	14.2542	42.7625	5,000	Pass
Ethyl ether	ND	6.8124	20.4372	5,000	Pass
Ethylene glycol	ND	3.4447	10.334	620	Pass
Ethylene Oxide	ND	6.5244	19.5733	50	Pass
Heptane	ND	0.4144	1.2431	5,000	Pass
Hexane	ND	0.5026	1.5078	290	Pass
Isobutane	ND	10.2495	30.7486	5,000	Pass
Isopropyl acetate	ND	4.1274	12.3823	5,000	Pass
Methanol	ND	18.42	55.26	3,000	Pass
N,N-dimethylacetamide	ND	268.955	806.8649	1,090	Pass
N,N-dimethylformamide	ND	2.7382	8.2147	880	Pass
Pentane	ND	0.8382	2.5146	5,000	Pass
Propane	ND	7.9467	23.8402	5,000	Pass
Pyridine	ND	19.55	58.64	100	Pass
Sulfolane	ND	22.886	68.6581	160	Pass
Tetrahydrofuran	ND	6.2156	18.6469	720	Pass
Toluene	ND	0.4061	1.2184	890	Pass
Total Xylenes	ND	10.3738	31.1216	2,170	Pass

Josh M Swider

Josh Swider
Lab Director, CEO

Iced Tea Lemonade
8/14/2024