



Certificate of Analysis

CDPHE QA SAMPLE

1 of 4

ICAL ID: 20240610-018
Sample: CA240610-014-034
NCKB03B
Strain: NCKB03B
Category: Ingestible
Type: Beverage

Climbing Kites, LLC
Lic. #
P.O. Box 655
Salida, CO 81201
Niche Beverage
Lic. #
4131 Turrill St Cincinnati, Ohio 45223

Batch#: NCKB03
Batch Size Collected:
Total Batch Size:
Collected: 06/12/2024; Received: 06/12/2024
Completed: 06/12/2024

Moisture	$\Delta 9$ -THC	CBD	Total Cannabinoids	Sum of Cannabinoids	Total Terpenes
NT	9.57 mg/unit	18.63 mg/unit	28.21 mg/unit	28.21 mg/unit	NT
Water Activity					
NT					

Summary	SOP Used	Date Tested	
Batch			Pass
Cannabinoids	POT-PREP-002	06/11/2024	Complete
Residual Solvents	RS-PREP-001		Complete
Microbials	MICRO-PREP-001	06/12/2024	Pass
Mycotoxins	PESTMYCO-LC-PREP-001		Complete
Heavy Metals	HM-PREP-001	06/11/2024	Pass
Pesticides	PESTMYCO-LC-PREP-001 / PEST-GC-PREP-001		Complete



Scan to see results

Cannabinoid Profile

1 Unit = can, 358.07 g. 1 mL = 1 g.

Analyte	LOQ (mg/g)	LOD (mg/g)	%	mg/g	mg/mL	mg/unit	Analyte	LOQ (mg/g)	LOD (mg/g)	%	mg/g	mg/mL	mg/unit
THCa	0.0128	0.0043	ND	ND	ND	ND	CBGa	0.0046	0.0015	ND	ND	ND	ND
$\Delta 9$ -THC	0.0046	0.0010	0.003	0.03	0.03	9.57	CBG	0.0046	0.0005	ND	ND	ND	ND
$\Delta 8$ -THC	0.0046	0.0014	ND	ND	ND	ND	CBN	0.0046	0.0005	ND	ND	ND	ND
THCV	0.0046	0.0006	ND	ND	ND	ND	Total THC			0.00	0.03	0.03	9.57
CBDa	0.0049	0.0016	ND	ND	ND	ND	Total CBD			0.01	0.05	0.05	18.63
CBD	0.0046	0.0008	0.005	0.05	0.05	18.63	Total			0.01	0.08	0.08	28.21
CBDV	0.0046	0.0004	ND	ND	ND	ND	Sum of Cannabinoids			0.01	0.08	0.08	28.21
CBC	0.0076	0.0025	ND	ND	ND	ND							

Total THC = THCa * 0.877 + $\Delta 9$ -THC; Total CBD = CBDa * 0.877 + CBD. NR = Not Reported, ND = Not Detected. Potency is reported on a dry weight basis. Instrumentation and analysis SOPs used: Cannabinoids: UHPLC-DAD (POT-INST-005), Moisture: Moisture Analyzer (MOISTURE-001). The measurement of uncertainty for total THC concentration is $\pm 0.009\%$.

Terpene Profile

Analyte	LOQ (mg/g)	LOD (mg/g)	%	mg/g	Analyte	LOQ (mg/g)	LOD (mg/g)	%	mg/g
---------	------------	------------	---	------	---------	------------	------------	---	------

NR = Not Reported (no analysis was performed); ND = Not Detected (the concentration is less than the Limit of Detection (LOD)). Analytical instrumentation used: HS-GC-MS; samples analyzed according to SOP CO-TERP-INST-003.



Infinite Chemical Analysis Labs
8312 Miramar Mall
San Diego, CA
(858) 623-2740
www.infiniteCAL.com
Lic# C8-000047-LIC

Josh M Swider

Josh Swider
Lab Director, Managing Partner
06/12/2024

Confident LIMS
All Rights Reserved
coa.support@confidentlims.com
(866) 506-5866
www.confidentlims.com



This product has been tested by Infinite Chemical Analysis Labs, LLC using validated testing methods and a quality control system as required by state law. Sample processing and testing was performed in accordance with CDPHE Colorado Wholesale Food, Industrial Hemp, and Shellfish Regulations (6 CCR 1010-21). Values reported relate only to the product tested. Infinite Chemical Analysis Labs, LLC makes no claims pertaining to the efficacy, safety, or other risks associated with any detected or non-detected levels of any compounds reported herein. This Certificate shall not be reproduced except in full without the written approval of Infinite Chemical Analysis Labs, LLC.



Certificate of Analysis

CDPHE QA SAMPLE

2 of 4

ICAL ID: 20240610-018
Sample: CA240610-014-034
NCKB03B
Strain: NCKB03B
Category: Ingestible
Type: Beverage

Climbing Kites, LLC
Lic. #
P.O. Box 655
Salida, CO 81201
Niche Beverage
Lic. #
4131 Turrill St Cincinnati, Ohio 45223

Batch#: NCKB03
Batch Size Collected:
Total Batch Size:
Collected: 06/12/2024; Received: 06/12/2024
Completed: 06/12/2024

Residual Solvent Analysis

Category 1	LOQ	LOD	Limit	Status	Category 2	LOQ	LOD	Limit	Status	Category 2	LOQ	LOD	Limit	Status			
	µg/g	µg/g	µg/g	µg/g		µg/g	µg/g	µg/g	µg/g		µg/g	µg/g	µg/g	µg/g			
1,2-Dichloro-Ethane	NR	0.264	0.088	1	NT	Acetone	NR	51.246	0.716	5000	NT	n-Hexane	NR	0.281	0.027	290	NT
Benzene	NR	0.052	0.017	1	NT	Acetonitrile	NR	0.42	0.14	410	NT	Isopropanol	NR	2.86	0.614	5000	NT
Chloroform	NR	0.076	0.025	1	NT	Butane	NR	4.849	0.748	5000	NT	Methanol	NR	2.602	0.867	3000	NT
Ethylene Oxide	NR	0.579	0.179	1	NT	Ethanol	NR	7.575	2.525	5000	NT	Pentane	NR	5.075	1.692	5000	NT
Methylene-Chloride	NR	0.729	0.08	1	NT	Ethyl-Acetate	NR	2.288	0.175	5000	NT	Propane	NR	9.709	3.236	5000	NT
Trichloroethene	NR	0.145	0.028	1	NT	Ethyl-Ether	NR	2.869	0.389	5000	NT	Toluene	NR	0.864	0.067	890	NT
						Heptane	NR	2.859	0.496	5000	NT	Xylenes	NR	2.572	0.326	2170	NT

NR = Not Reported (no analysis was performed), ND = Not Detected (the concentration is less than the Limit of Detection (LOD)). Analytical instrumentation used: HS-GC-MS; samples analyzed according to SOP CO-RS-INST-003.

Heavy Metal Screening

	LOQ	LOD	Limit	Status	
µg/g	µg/g	µg/g	µg/g		
Arsenic	ND	0.009	0.003	1.5	Pass
Cadmium	ND	0.002	0.001	0.5	Pass
Lead	ND	0.004	0.001	0.5	Pass
Mercury	ND	0.014	0.005	1.5	Pass

NR = Not Reported (no analysis was performed), ND = Not Detected (the concentration is less than the Limit of Detection (LOD)). Analytical instrumentation used: ICP-MS; samples analyzed according to SOP CO-HM-INST-003.

Microbiological Screening

	Limit	Result	Status
	CFU/g	CFU/g	
Salmonella SPP		Not Detected	Pass
STEC		Not Detected	Pass
Total Coliforms	100	NR	NT
Total Aerobic Plate Count	10000	NR	NT
Total Yeast and Mold	1000	NR	NT

ND=Not Detected. Analytical instrumentation used:qPCR and microbial plating; samples analyzed according to SOPs CO-MICRO-PREP-001 and CO-MICRO-PLATE-001.



Infinite Chemical Analysis Labs
8312 Miramar Mall
San Diego, CA
(858) 623-2740
www.infiniteCAL.com
Lic# C8-0000047-LIC

Josh M Swider

Josh Swider
Lab Director, Managing Partner
06/12/2024

Confident LIMS
All Rights Reserved
coa.support@confidentlims.com
(866) 506-5866
www.confidentlims.com



This product has been tested by Infinite Chemical Analysis Labs, LLC using validated testing methods and a quality control system as required by state law. Sample processing and testing was performed in accordance with CDPHE Colorado Wholesale Food, Industrial Hemp, and Shellfish Regulations (6 CCR 1010-21). Values reported relate only to the product tested. Infinite Chemical Analysis Labs, LLC makes no claims pertaining to the efficacy, safety, or other risks associated with any detected or non-detected levels of any compounds reported herein. This Certificate shall not be reproduced except in full without the written approval of Infinite Chemical Analysis Labs, LLC.



Certificate of Analysis

CDPHE QA SAMPLE

3 of 4

ICAL ID: 20240610-018
Sample: CA240610-014-034
NCKB03B
Strain: NCKB03B
Category: Ingestible
Type: Beverage

Climbing Kites, LLC
Lic. #
P.O. Box 655
Salida, CO 81201
Niche Beverage
Lic. #
4131 Turrill St Cincinnati, Ohio 45223

Batch#: NCKB03
Batch Size Collected:
Total Batch Size:
Collected: 06/12/2024; Received: 06/12/2024
Completed: 06/12/2024

Chemical Residue Screening

Category 1	LOQ	LOD	Status	Mycotoxins	LOQ	LOD	Limit	Status		
	µg/g	µg/g	µg/g		µg/kg	µg/kg	µg/kg			
Aldicarb	NR	0.065	0.022	NT	B1	NR	7.88	2.6	NT	
Carbofuran	NR	0.030	0.009	NT	B2	NR	6.18	2.04	NT	
Chlorfenapyr	NR	0.075	0.025	NT	G1	NR	8.99	2.97	NT	
Chlorpyrifos	NR	0.053	0.018	NT	G2	NR	5.72	1.89	NT	
Coumaphos	NR	0.056	0.018	NT	Ochratoxin A	NR	11.72	3.87	20	NT
Daminozide	NR	0.079	0.026	NT	Total Aflatoxins	NR		20	NT	
Dichlorvos	NR	0.067	0.022	NT						
Dimethoate	NR	0.036	0.012	NT						
Ethoprophos	NR	0.053	0.017	NT						
Etofenprox	NR	0.030	0.008	NT						
Fenoxycarb	NR	0.043	0.014	NT						
Fipronil	NR	0.045	0.015	NT						
Imazalil	NR	0.047	0.016	NT						
Methiocarb	NR	0.047	0.016	NT						
Mevinphos	NR	0.042	0.014	NT						
MGK-264	NR			NT						
Pacllobutrazol	NR	0.040	0.013	NT						
Parathion Methyl	NR	0.024	0.008	NT						
Propoxur	NR	0.047	0.016	NT						
Spiroxamine	NR	0.032	0.011	NT						
Thiacloprid	NR	0.042	0.014	NT						

Category 2	LOQ	LOD	Limit	Status	Category 2	LOQ	LOD	Limit	Status		
	µg/g	µg/g	µg/g	µg/g		µg/g	µg/g	µg/g	µg/g		
Abamectin	NR	0.030	0.010	0.3	NT	Kresoxim Methyl	NR	0.038	0.012	1	NT
Acephate	NR	0.050	0.016	5	NT	Malathion	NR	0.035	0.012	5	NT
Acequinocyl	NR	0.059	0.019	4	NT	Metalaxyl	NR	0.031	0.010	15	NT
Acetamiprid	NR	0.044	0.015	5	NT	Methomyl	NR	0.048	0.016	0.1	NT
Azoxystrobin	NR	0.029	0.010	40	NT	Myclobutanil	NR	0.055	0.018	9	NT
Bifenazate	NR	0.035	0.012	5	NT	Naled	NR	0.051	0.017	0.5	NT
Bifenthrin	NR	0.040	0.013	0.5	NT	Oxamyl	NR	0.046	0.015	0.3	NT
Boscalid	NR	0.060	0.020	10	NT	Pentachloronitrobenzene	NR	0.054	0.018	0.2	NT
Carbaryl	NR	0.049	0.016	0.5	NT	Permethrin	NR	0.030	0.008	20	NT
Chlorantraniliprole	NR	0.063	0.021	40	NT	Phosmet	NR	0.038	0.012	0.2	NT
Clofentezine	NR	0.039	0.013	0.5	NT	Piperonyl Butoxide	NR	0.030	0.008	8	NT
Cyfluthrin	NR	0.056	0.019	1	NT	Prallethrin	NR	0.068	0.023	0.4	NT
Cypermethrin	NR	0.044	0.015	1	NT	Propiconazole	NR	0.059	0.019	20	NT
Diazinon	NR	0.030	0.006	0.2	NT	Pyrethrins	NR	0.030	0.004	1	NT
Dimethomorph	NR	0.042	0.014	20	NT	Pyridaben	NR	0.035	0.012	3	NT
Etoxazole	NR	0.030	0.008	1.5	NT	Spinetoram	NR	0.030	0.006	3	NT
Fenhexamid	NR	0.039	0.013	10	NT	Spinosad	NR	0.030	0.004	3	NT
Fenpyroximate	NR	0.030	0.010	2	NT	Spiromesifen	NR	0.042	0.014	12	NT
Flonicamid	NR	0.081	0.027	2	NT	Spirotetramat	NR	0.041	0.013	13	NT
Fludioxonil	NR	0.046	0.015	30	NT	Tebuconazole	NR	0.044	0.014	2	NT
Hexythiazox	NR	0.078	0.026	2	NT	Thiamethoxam	NR	0.055	0.018	4.5	NT
Imidacloprid	NR	0.071	0.023	3	NT	Trifloxystrobin	NR	0.031	0.010	30	NT

Other Analyte(s):

NR = Not Reported (no analysis was performed), ND = Not Detected (the concentration is less than the Limit of Detection (LOD)). Analytical instrumentation used: LC-MS-MS & GC-MS-MS; samples analyzed according to SOPs CO-PESTMYCO-LC-INST-004 and CO-PEST-GC-INST-004 and CO-PEST-GC-INST-003.



Infinite Chemical Analysis Labs
8312 Miramar Mall
San Diego, CA
(858) 623-2740
www.infiniteCAL.com
Lic# C8-0000047-LIC

Josh M Swider

Josh Swider
Lab Director, Managing Partner
06/12/2024

Confident LIMS
All Rights Reserved
coa.support@confidentlims.com
(866) 506-5866
www.confidentlims.com



This product has been tested by Infinite Chemical Analysis Labs, LLC using validated testing methods and a quality control system as required by state law. Sample processing and testing was performed in accordance with CDPHE Colorado Wholesale Food, Industrial Hemp, and Shellfish Regulations (6 CCR 1010-21). Values reported relate only to the product tested. Infinite Chemical Analysis Labs, LLC makes no claims pertaining to the efficacy, safety, or other risks associated with any detected or non-detected levels of any compounds reported herein. This Certificate shall not be reproduced except in full without the written approval of Infinite Chemical Analysis Labs, LLC.



Certificate of Analysis

CDPHE QA SAMPLE

4 of 4

ICAL ID: 20240610-018
Sample: CA240610-014-034
NCKB03B
Strain: NCKB03B
Category: Ingestible
Type: Beverage

Climbing Kites, LLC
Lic. #
P.O. Box 655
Salida, CO 81201
Niche Beverage
Lic. #
4131 Turrill St Cincinnati, Ohio 45223

Batch#: NCKB03
Batch Size Collected:
Total Batch Size:
Collected: 06/12/2024; Received: 06/12/2024
Completed: 06/12/2024

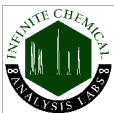
Chemical Residue Screening

Analytes	LOQ	LOD	Limit	Status	Analytes	LOQ	LOD	Limit	Status
----------	-----	-----	-------	--------	----------	-----	-----	-------	--------

Mycotoxins		LOQ	LOD	Limit	Status	Mycotoxins		LOQ	LOD	Limit	Status
	µg/kg	µg/kg	µg/kg	µg/kg			µg/kg	µg/kg	µg/kg	µg/kg	
B1	NR	7.88	2.6		NT	G2	NR	5.72	1.89		NT
B2	NR	6.18	2.04		NT	Ochratoxin A	NR	11.72	3.87	20	NT
G1	NR	8.99	2.97		NT	Total Aflatoxins	NR			20	NT

Other Analyte(s):

NR = Not Reported (no analysis was performed), ND = Not Detected (the concentration is less than the Limit of Detection (LOD)). Analytical instrumentation used: LC-MS-MS & GC-MS-MS; samples analyzed according to SOPs CO-PESTMYCO-LC-INST-004 and CO-PEST-GC-INST-004 and CO-PEST-GC-INST-003.



Infinite Chemical Analysis Labs
8312 Miramar Mall
San Diego, CA
(858) 623-2740
www.infiniteCAL.com
Lic# C8-000047-LIC

Josh M Swider

Josh Swider
Lab Director, Managing Partner
06/12/2024

Confident LIMS
All Rights Reserved
coa.support@confidentlims.com
(866) 506-5866
www.confidentlims.com



This product has been tested by Infinite Chemical Analysis Labs, LLC using validated testing methods and a quality control system as required by state law. Sample processing and testing was performed in accordance with CDPHE Colorado Wholesale Food, Industrial Hemp, and Shellfish Regulations (6 CCR 1010-21). Values reported relate only to the product tested. Infinite Chemical Analysis Labs, LLC makes no claims pertaining to the efficacy, safety, or other risks associated with any detected or non-detected levels of any compounds reported herein. This Certificate shall not be reproduced except in full without the written approval of Infinite Chemical Analysis Labs, LLC.

Certificate of Analysis Appendix

Residual Solvents - Utah Industrial Hemp

Analyte	Result (ug/g)	LOD (ug/g)	LOQ (ug/g)	Action Limit(ug/g)	Status
1,2 Dimethoxyethane	ND	5.9917	17.975	100	Pass
1,4 Dioxane	ND	12.8684	38.6052	380	Pass
1-Butanol	ND	3.1446	9.4337	5,000	Pass
1-Pentanol	ND	9.9794	29.9383	5,000	Pass
1-Propanol	ND	6.9987	20.9962	5,000	Pass
2-Butanol	ND	9.5709	28.7127	5,000	Pass
2-Butanone	ND	7.2129	21.6386	5,000	Pass
2-Ethoxyethanol	ND	3.8723	11.6169	160	Pass
2-methylbutane	ND	0.679	2.037	5,000	Pass
2-methylpentane	ND	9.0715	27.2145	290	Pass
3-methylpentane	ND	7.3795	22.1384	290	Pass
2-Propanol (IPA)	ND	11.5286	34.5857	5,000	Pass
Acetone	ND	8.2267	24.6802	5,000	Pass
Acetonitrile	ND	8.3746	25.1238	410	Pass
Benzene	ND	0.3588	1.0763	2	Pass
Butane	ND	9.552	28.6559	5,000	Pass
Cumene	ND	8.32	24.96	70	Pass
Cyclohexane	ND	8.4235	25.2705	3,880	Pass
Dichloromethane	ND	3.9511	11.8533	600	Pass
2,2-dimethylbutane	ND	0.8804	2.6412	290	Pass
2,3-dimethylbutane	ND	0.9493	2.8479	290	Pass
Dimethyl sulfoxide	ND	8.3992	25.1976	5,000	Pass
Ethanol	27.3554	4.8156	14.4469	5,000	Pass
Ethyl acetate	ND	14.2542	42.7625	5,000	Pass
Ethyl ether	ND	6.8124	20.4372	5,000	Pass
Ethylene glycol	ND	3.4447	10.334	620	Pass
Ethylene Oxide	ND	6.5244	19.5733	50	Pass
Heptane	ND	0.4144	1.2431	5,000	Pass
Hexane	ND	0.5026	1.5078	290	Pass
Isobutane	ND	10.2495	30.7486	5,000	Pass
Isopropyl acetate	ND	4.1274	12.3823	5,000	Pass
Methanol	ND	18.42	55.26	3,000	Pass
N,N-dimethylacetamide	ND	268.955	806.8649	1,090	Pass
N,N-dimethylformamide	ND	2.7382	8.2147	880	Pass
Pentane	ND	0.8382	2.5146	5,000	Pass
Propane	ND	7.9467	23.8402	5,000	Pass
Pyridine	ND	19.55	58.64	100	Pass
Sulfolane	ND	22.886	68.6581	160	Pass
Tetrahydrofuran	ND	6.2156	18.6469	720	Pass
Toluene	ND	0.4061	1.2184	890	Pass
Total Xylenes	ND	10.3738	31.1216	2,170	Pass

Josh M Swider

Josh Swider
Lab Director, CEO

NCKB03B
6/12/2024